

Description: Guide to configure Moeller 2.x OPC Server
OS Requirement: Win 2000 Pro/Server, XP Pro, Server 2003
General Requirement: N/A

Introduction

The Moeller OPC Server allows you to configure OPC tags that acquire process data from Moeller PLCs. The server is capable of:

- Supporting PS4-141, PS4-151, PS4-201, PS4-341, PS416-CPU-200/300/400 PLCs utilizing the SUCOM-A protocol through a RS232 serial communications interface COM1, COM2, COM3, and COM4
- Supporting folders and sub-folder
- Tag multiplication
- CSV configuration import/export
- Scaling OPC tag ranges
- Online configuration
- Running in simulation mode

This document will walk you through the steps of configuring a simple Moeller OPC Server.

Configuring the Moeller Server

1. Start the Moeller Configurator by going to Start → Programs → ICONICS Moeller OPC Server → Moeller OPC Server
2. Select File → New from the menu to create a new configuration
3. Give the configuration a name and save the configuration
4. Select Add → New Device... from the menu
5. Specify a name and the communication ports to which your device is connected and click on “OK”.

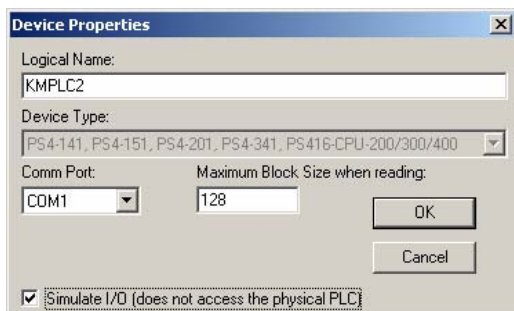


Figure 1 - Device Properties

NOTE: You can check the Simulate I/O option if you do not have a device to connect to yet.

6. In the left-hand pane, right-click on the device that you have just created and select New → Group...
7. Give the group a name and click on “OK”.

8. In the left-hand pane, right-click on the group that you have just created and select New → Data Tag...
9. Give the tag a name and configure the tag properties. You can configure a tag similar to one show in Figure 2.

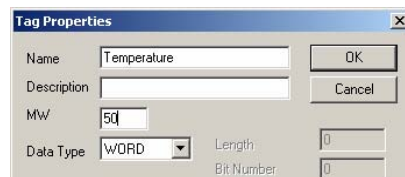


Figure 2 - Temperature Tag Properties

10. Click on “OK” when you are done.
11. Repeat steps 8-10 to create another tag. You can configure the tag similar to

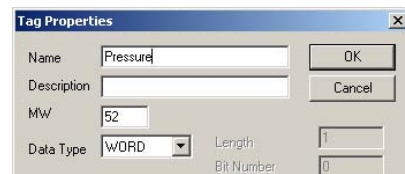


Figure 3 - Pressure Tag Properties

12. Save the configuration.
13. Select View → Monitor to see live data.

Name	Type	Location	Processing	Value
Pressure	Marker Word	000052		67
Temperature	Marker Word	000050		67

Figure 4 - Monitoring Values in the Configurator

14. You can exit out of the configurator. Any OPC client can now browse to the Moeller OPC Server and use the OPC tags you have just created.

Tag Multiplication

1. Start the Moeller OPC Server configurator if its not already started
2. Click on a tag that you want to multiply.
3. Select Add → Multiply... from the menu and specify how many tags you want to multiply and the naming convention. You can specify the settings as show in Figure 5.



Figure 5 - Multiply Tag

4. Click on “OK” when you are done.