

Description: Guide on converting Intellution graphics files (*.GRF files) into an open web format (*.JDF) and then translating them into ICONICS GraphWorX32 (*.GDF files).
OS Requirement: Win 2000 Pro / Server, XP Pro without MS Office 2003.
General Requirement: GENESIS32 v9.0 and iFix 2.6 or 3.5 must be installed on the PC. The PC must also have IIS (Internet Information Server) installed.

Conversion from GRF file to JDF file

The following steps are necessary to convert Intellution native graphics files (*.GRF) into an open web format (*.JDF):

1. Install iFix ver. 2.6 or ver. 3.5
2. Install Intellution Fix Dynamics Web Server V2.0
3. Start iFix using a command line: launch.exe s/C:\Dynamics\SampleSystem\Local\sample.scu
4. In the iFix application go into a menu **Workspace** → **Toolbars...**
5. Click on **Customize** button
6. Click on **Import...** button
7. Select **webconverterTB** and click on Import... button again
8. Click OK on all of the possible error messages

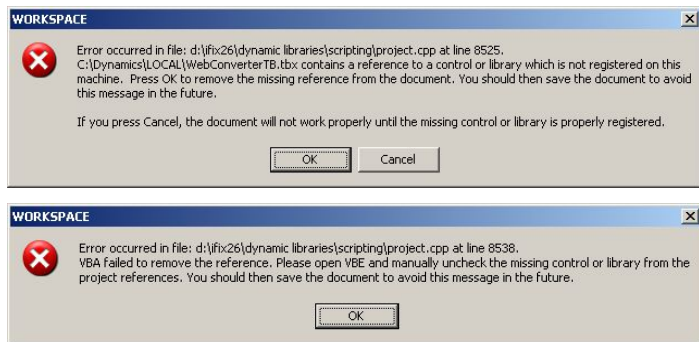


Figure 1 – Error messages during importing Web Converter Tool

9. To convert the GRF files to JDF files, click on **Web Converter** icon

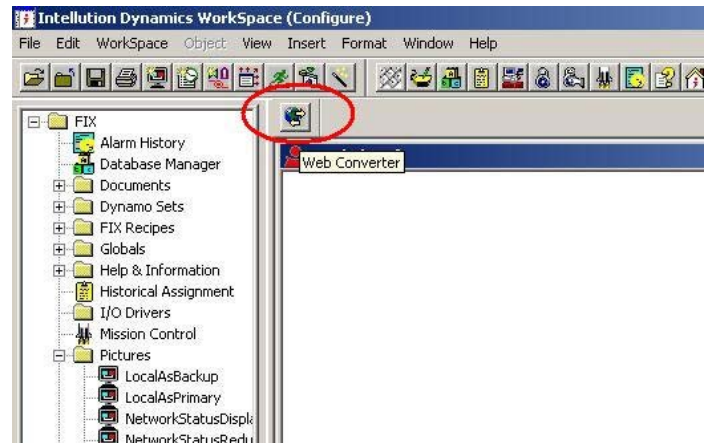


Figure 2 – Web Converter icon

10. There should be an error message (Compile error: Can't find project or library), click on OK to confirm this error message and go to **Run** → **Reset**

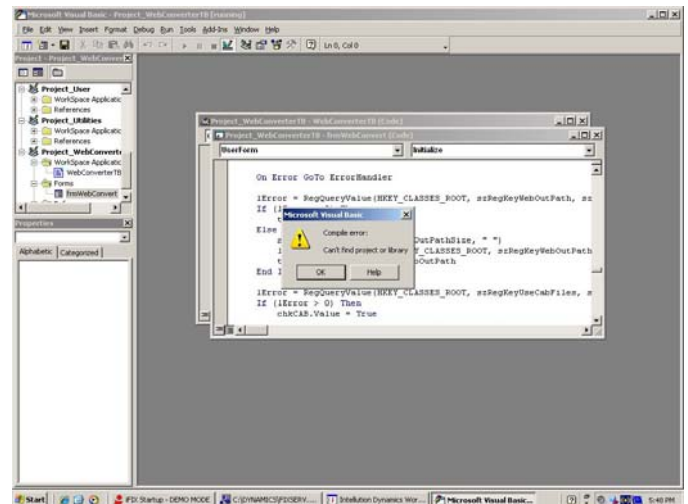


Figure 3 – Error messages during starting Web Converter Tool

11. Go to **Tools** → **References** and uncheck: **MISSING:ActiveXTypeLibrary**
12. Go to **Run** → **Start** and Web Converter Tool should start properly

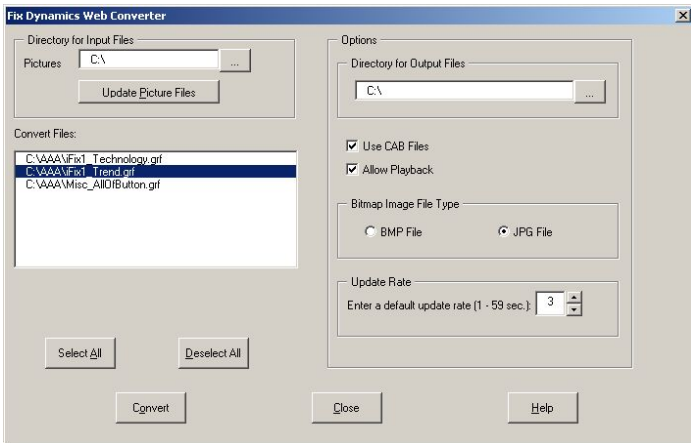


Figure 4 – Fix Dynamics Web Converter

13. To convert the files, select the appropriate folder with the files for the conversion (**Directory for Input files**).
14. Click on **Update Picture Files** to refresh the list of files to convert.
15. Select the files which should be converted. Possibly select all files by **Select All** or deselect all by **Deselect All**.
16. Select the output directory where the converted files will be put (**Directory for Output Files**).
17. Uncheck **Use CAB files** and **Allow Playback**. Check **Bitmap Image File Type – BMP File**.
18. Click on **Convert** button to convert selected files. Converter will create JDF, HTM and LOG files. The most important file is JDF.

Translating from JDF file to GDF file

To translate JDF files to ICONICS GraphWorX32 file format (*.gdf), complete the following steps:

1. Go to start up menu **ICONICS Tools → Translators → Intellution Converter**

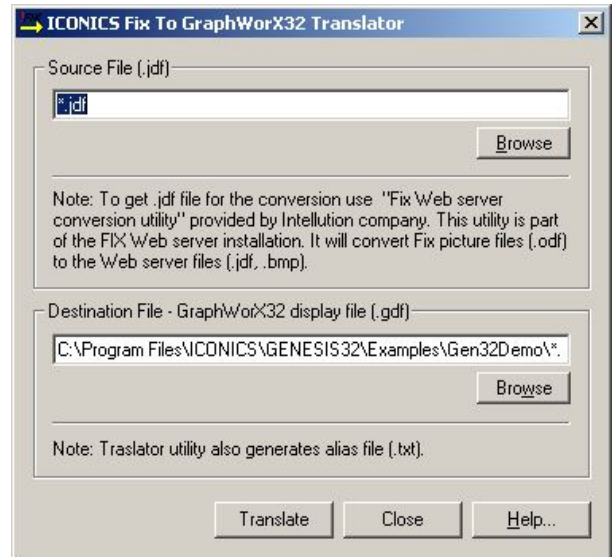


Figure 1 – ICONICS Fix to GraphWorX32 Translator

2. Browse for the **Source File** (JDF) by clicking on first Browse button
3. Select the **Destination File** by clicking on second Browse button
4. Click on **Translate** button to translate the JDF to GDF file. After translating, Translator will create not only GDF file but also the TXT (with the local aliases) and LOG (results) files.