

Description: Guide to configuring and connecting to DDE OPC Server 2.x.

OS Requirement: Win 2000 Pro/Server, XP Pro, Server 2003

General Requirement: N/A

Introduction

The Dynamic Data Exchange (DDE) OPC Server allows you to configure OPC Tags which acquire process data from DDE Servers. DDE was used in the beginning of Windows era in order to allow inter process communications between various windows programs.

Capabilities:

- OPC Server acts as a DDE client in respect to the communications with a DDE Server.
- OPC Clients can connect to DDE links without even configuring the OPC DDE Server.
- Supports OPC DA Specification v1.01a and v2.0
- Configuration Export/Import CSV (comma separated variable format) for bulk editing tag lists in for instance Text Editors or MS-EXCEL.
- OPC tags can be scaled and have ranges
- Online configuration

Using the DDE OPC Server

1. Install the OPC DDE Server using the serial number that is on the back of your CD Packet.
2. Start MS Excel and configure your data an Excel spreadsheet.
3. Copy one of the cells by pressing Ctrl + C.
4. Open another instance of Excel, right-click in a cell and select “Paste Special...”
5. In the window that comes up, select “paste link”, and then click “OK”

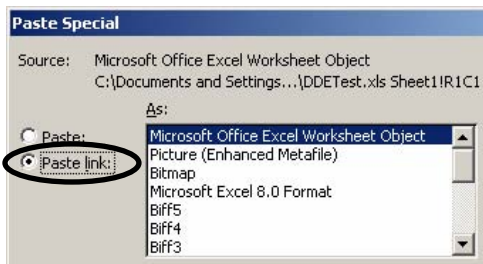


Figure 1 - Paste Special Dialog in Excel

6. Copy and paste the link (not the value you see in the cell) without the equal sign.
7. Start GraphWorX32 from **Start → Programs → ICONICS GENESIS32 → GraphWorX32 → GraphWorX32** and place a process point on your display.
8. Click on the **Data Tag ...** button to bring up the Unified Data Browser
9. Expand **My Computer → ICONICS.DDEOPCServer.1 → Data.**
10. Select **Link** and you should see a tag in the text box similar to “ICOINCS.DDEOPCServer.1\”
11. Click in the text box and paste in the link you have copied in step 6.
12. Edit the tag so it looks similar to the tag in Figure 2.

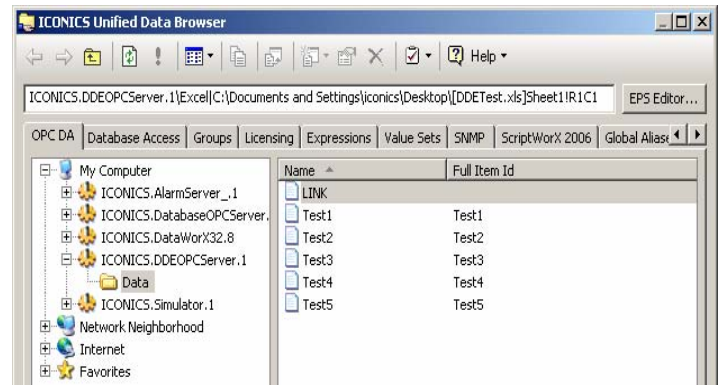



Figure 2 - Data Tag

NOTE: Your tag syntax should be of the following format
Excel|ExcelFilePath\[NameOfExcelFile.xls]ExcelSheet!R#C#

13. Click **OK** until you are out of the properties inspector.
14. Go into runtime in GraphWorX32 and you should see the same value in your excel cell in your tag.

Alias Names for the DDE links

You could also configure the DDE OPC Server and give the DDE links meaningful names. The next example demonstrates how you could configure tags with a name

1. Start the OPC DDE Configurator by going to **Start → Programs → ICONICS DDE OPC Server → DDE OPC Server**.
2. Make sure that there are no OPC Clients connected and click on **File → New**
3. Give the file a name and save it
4. Click on the **New Tag (Ins)**  button to create a new tag.
5. Give the tag a name. The link to the tag should be the same as your GraphWorX32 tag without ICONICS.DDEOPCServer.1. See Figure 3.

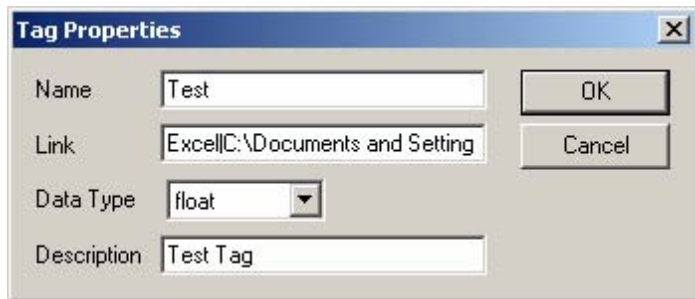


Figure 3 - Tag Properties

6. Click **OK** when you are done.

7. In the DDE OPC Configurator, select **View → Monitor** and you should see the value of the tag that you have added.

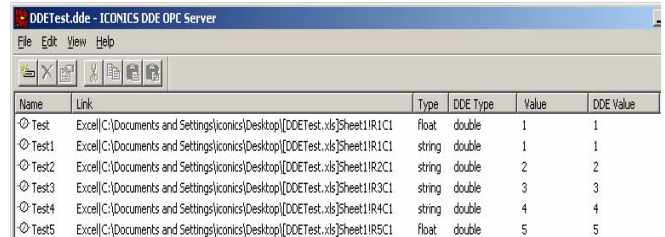


Figure 4 - Live Data in Monitor View

8. Open GraphWorX32, insert a process point and click on the **Data Tag ...** button.
9. Browse to the DDE OPC server in the Unified Data Browser and you should see your tag in the Unified Data Browser

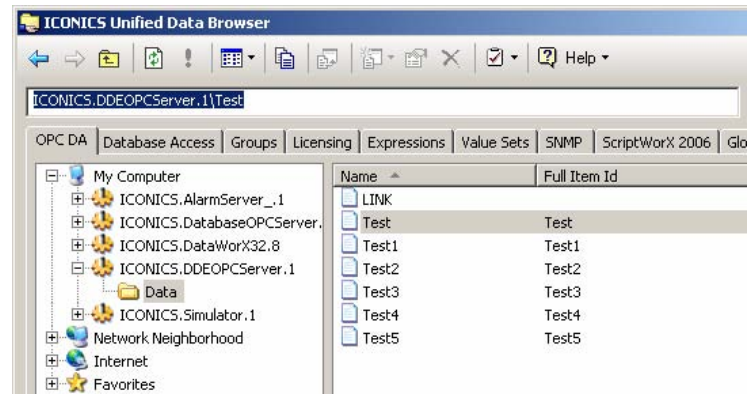


Figure 5 - Unified Data Browser

10. Select the tag, can click **OK** until you are out of the properties inspector.
11. Go into runtime and you should see your tag value.