

**Description:** Guide to setup Dr. Watson for Windows 2000, Windows 2003 and Windows XP  
**OS Requirement:** Win 2000 Pro/Server, XP Pro, Server 2003  
**General Requirement:** N/A

## Introduction

Dr. Watson is a built-in Windows utility that is invoked when software on the PC experiences an application fault (crash). One needs to have Dr. Watson setup properly if they are experiencing a software crash so that a useful log file will be generated.

## Setting Up Dr. Watson

1. Go to **Start** → **Run**, type in “drwtsn32”, and hit **OK**

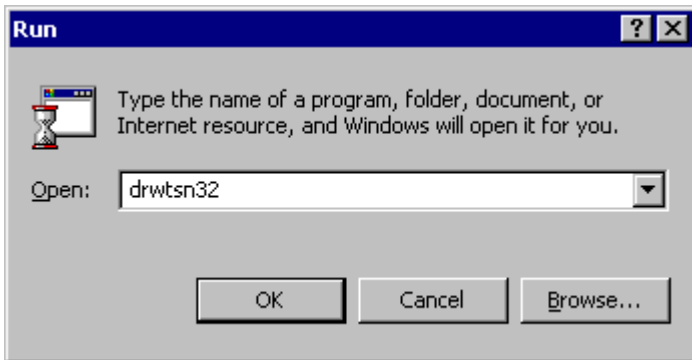


Figure 1 - Start Dr. Watson Configurator

2. In the dialog shown in Figure 3, make sure that the log file path and the crash dump path are locations you remember and that the other options are set as shown in Figure 3.
3. The notification options and the Dump Symbol Table options are optional. It is recommended that you use the visual notification so that you know when Dr. Watson is invoked on a crashed file.
4. If you are using XP, set the Crash Dump Type to “Mini” as shown below in Figure 3.

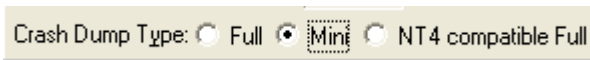


Figure 2 - Windows XP Option

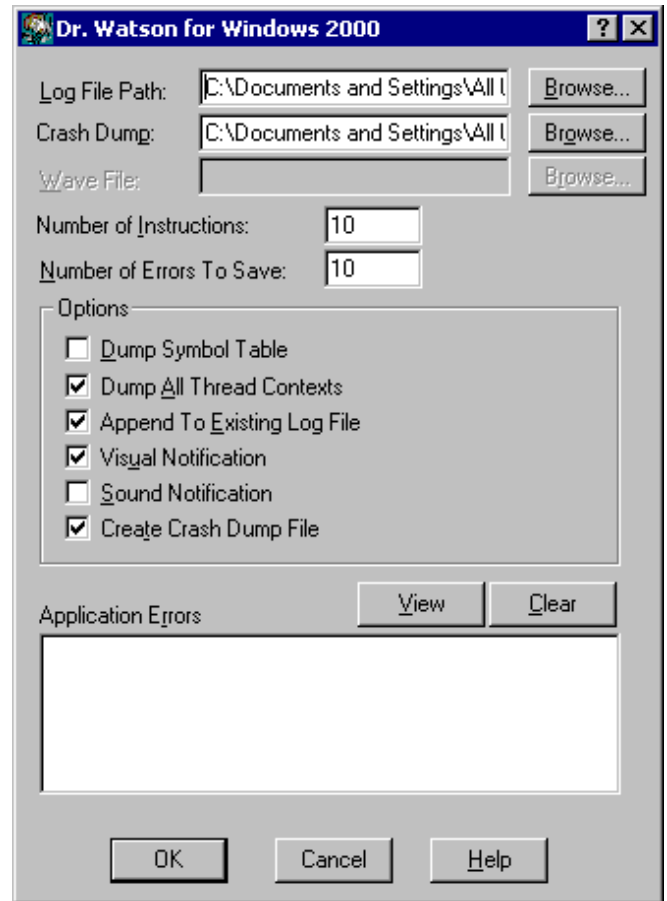


Figure 3 - Dr. Watson Dialog

5. Once a crash has occurred, please be sure to send the dump file and the log file to your support engineer at ICONICS for further review and analysis.