

Description: PortalWorX-SP based on SharePoint 2010 and its native Silverlight web parts

OS Requirement: Windows Server 2008 R2

General Requirement: SharePoint 2010 installation (described in this note), IIS 6.0 or higher, Installation of AnalytiX version 10.7 or later, Microsoft SQL Server 2008 R2 or higher

Introduction

This document will describe how to correctly install Microsoft SharePoint 2010 and create your own website. You should turn off your firewall and set the UAC to the lowest level before installation. You should also install AnalytiX to have the web parts ready and the virtual folder set up.

Installing SharePoint 2010

- Before we start with own installation we have to create a new user account. For this installation you should use 2 local accounts in order to be compliant with the least privilege administration policy. This policy requires service accounts not to be administrator of any server of a farm, and that each service or process runs using a distinct account.
- To create a new user account, go to Start Menu → Administrative Tools → Server Manager, as shown in Figure 1 below.

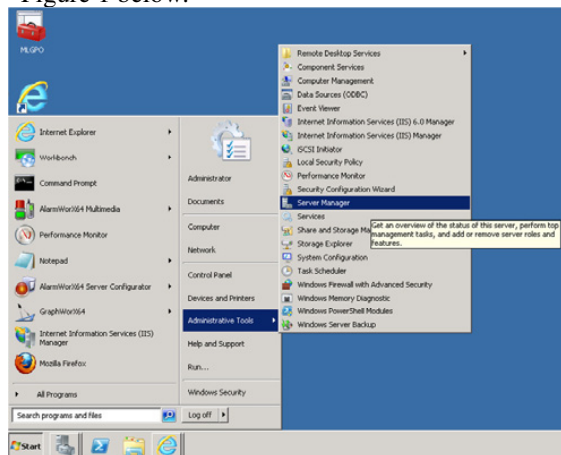


Figure 1 - Path for Server Manager

- Create a new account and configure it so that the password never expires, for example name can be SPS_Farm.

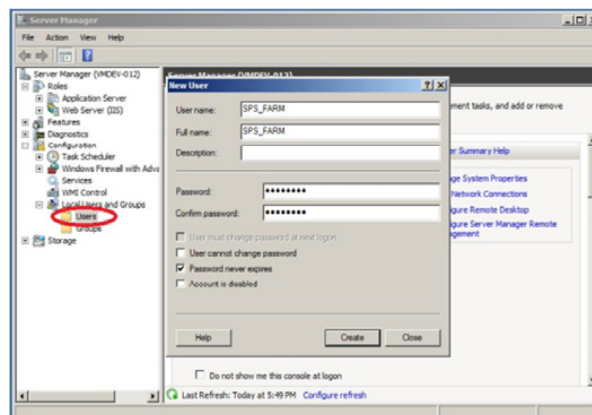


Figure 2 – User creation

- The next step is to **download SharePoint 2010** for installation, which can be found at this link <http://technet.microsoft.com/en-us/evalcenter/ee388573.aspx>
- You can select “SharePoint Server 2010 for Internet Sites, Standard” for the version to download, and press “Get Started Now” when selected.

Register for Download and Guided Evaluation

Register to access technical product resources—such as forums, solution accelerators, white papers and webcasts—in one convenient location.

- 1 Review Microsoft SharePoint Server 2010 system requirements
- 2 Register for evaluation
- 3 Download and install full featured software for 180-day trial
- 4 Receive 3 emails with resources to guide you
- 5 Use blogs and forums to share tips



Figure 3 - Version Selection

- On the next page, you will be asked to either create a Windows Live ID or sign in with your current account to continue the download.
- On the next page, select the language and press continue.
- Once you select download on the following page, you're the download of SharePointServer.exe should begin.
- Now double click the installation package you have downloaded into your computer to launch the installation of Microsoft SharePoint Server 2010.

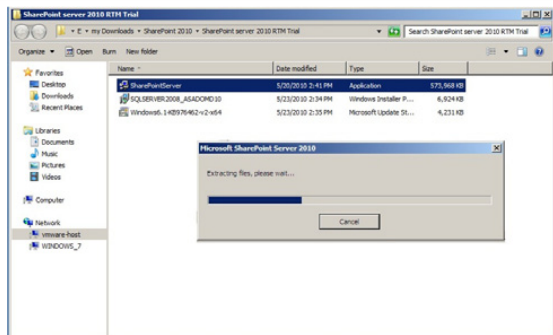


Figure 4 – SharePoint 2010 installation

10. The **SharePoint 2010 installation Wizard** is opening
11. Click the "Install Software Prerequisites" in order to update. The Microsoft SharePoint Product and technologies 2010 Preparation Tool is opening.

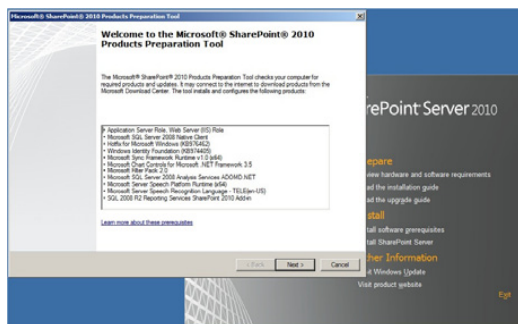


Figure 5 – Prerequisites installation

12. Accept the license agreement
13. You should get a notification of successful installation. Click Finish to complete the installation.
14. Now we will go back to the SharePoint 2010 Installation wizard, click the "Install SharePoint Server" link. You will then be prompted for a Product Key, which is sent to your Windows Live ID's email address.

NOTE: The product key is sent the first time that a particular Windows Live account downloads this product. If you have previously downloaded SharePoint 2010, you can use the same previous key.

15. After accepting the terms of use, you will be prompted to choose between "Standalone" or "Server Farm". Choose the "Server Farm".
16. Choose the complete installation as is shown in Figure 6.

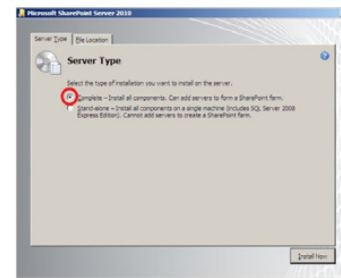


Figure 6– Complete installation

17. When the installation of the SharePoint files is finished you will be asked to continue with the SharePoint Products Configuration Wizard.

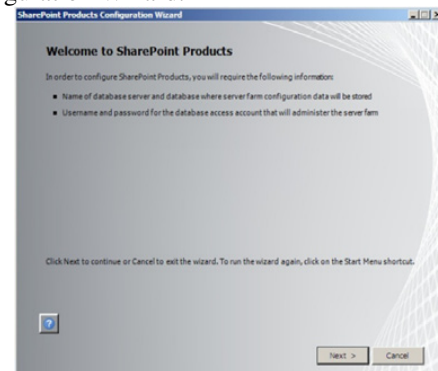


Figure 8 – Do not continue wizard

18. Do not continue with the Wizard but cancel it otherwise you will have an issue. In the SharePoint 2010 version, you are not allowed as before to mount a Farm installation on a single machine using local accounts. If you had continued with the wizard you would have been stopped in the configuration by the following issue: The specified user Administrator is a local account. Local accounts should only be used in standalone mode.
19. SharePoint Server 2010 should now be installed and ready to use.

NOTE: These instructions are for use with SQL Server 2008 R2. If you are using the 2012 edition, an upgrade to SharePoint 2010 SP1 is required. This can be downloaded from the following URL:
<http://www.microsoft.com/en-us/download/details.aspx?id=26623>

Creating SharePoint 2010 Database

20. Open the **SharePoint 2010 Management Shell** from Windows Start menu and Microsoft SharePoint 2010 Products.
21. Type the following command into the window:
`New-SPConfigurationDatabase`
22. Run the command by pressing the Enter Key.

23. The Shell will ask you for the database name choose any name, for example *SharePoint_Config*. For the database Server name type the name of your existing SQL Server, for example *computername\SQLEXPRESS*.
24. You will be then prompt for the system account credential. In our case to go fast and not start explaining the "least privileges administration policy" just type the SPS_Farm login that we created earlier and password. Please put the machine name (or IP address) followed by a \ before putting your user name in the login.
25. Then you are asked for a passphrase. You can use *P@ssw0rd* that matches the security policies required. This passphrase will be asked when you will add a new server to the SharePoint Farm. Close the window.
26. Now we will open **SharePoint 2010 Products Configuration Wizard** from Windows Start menu.
27. To begin, click Next, then "Connect to an existing server farm".
28. You should use the credentials of the server farm we just created using *SharePoint_Config* as the Database Name.

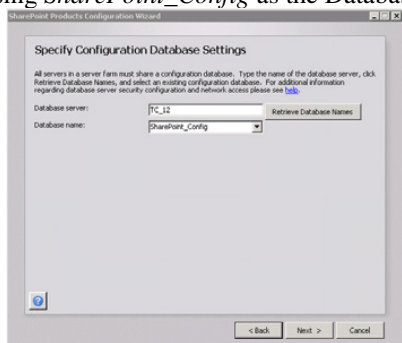


Figure 9 - Product Configuration Wizard

29. Enter *P@ssw0rd*
30. Then you will be prompted to choose the Central Administration Site port number. You can set it for example to 55555.
31. Maintain the default value of NTLM for the "Authentication provider". Click Next and Next again.
32. After you click "Finish" to close the wizard, the SharePoint 2010 Central Administration should open in your browser and click cancel to continue.

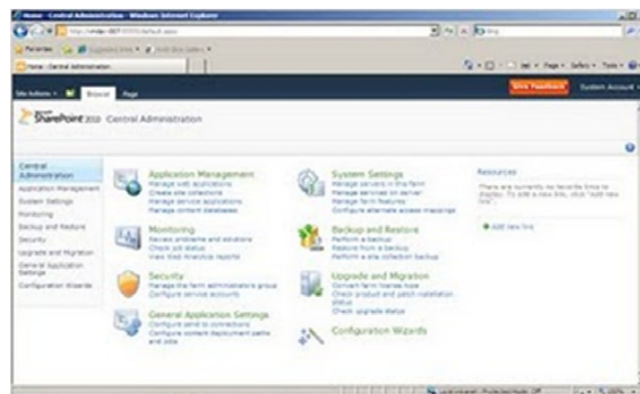


Figure 10 – Home page

Creating your first site in SP 2010

33. On the default page of the **SharePoint 2010 Central Administration**, click the "Manage web applications" link in the "Application Management" section
34. On the "Web Applications Management" page click the "New".
35. Create it on either "New IIS web site" or the default IIS web site. We recommend "New IIS web site"
36. Set the port number to anything other than port 80, since port 80 is used by the default site for many other Genesis64 applications. (for example 11111)
37. Name your website. You can notice the name automatically changed to "SharePoint – 11111". We can leave this name.
38. Leave the security options as is.
39. Use the application pool to "Create new application pool" and give it any name. You can leave it as it is.
If necessary, change the Database Server name. Give the database name any name you want, or leave it as it is.
40. Leave the rest of the settings as it is.
41. Click "OK" to close the wizard and to be taken back to the Web Application Management Page where you can see the new SharePoint 2010 Web Application.
42. From the "Web Applications Management" page click the "Application Management" link in the left menu in order to proceed to the creation of your first SharePoint 2010 Site Collection.
43. Then, click the "Create site collections" link under the "Site Collections" section. You are taken to the "Create Site Collection" page.
44. Give it any title and URL that you like, for example PortalWorX-SP. Choose 'Team Site' template.
45. Add the Primary Site Collection Administrator as the administrator account.
46. Leave the rest as is, then click OK.
47. Then you are prompted on that the site was created successfully. When clicking on this site link, you can display your first SharePoint 2010 site.

Creating sample view for your portal

48. At first you need to add ICONICS Web Parts in administration settings.
49. Run SharePoint 2010 Management Shell as an administrator and type in:

```
Stsadm -o addsolution -filename "C:\Program Files\ICONICS\GENESIS64\WorkbenchSL\IcoWebParts.wsp"
```

50. Open your SharePoint 2010 Central Administration page and go to Central Administration → System Settings → Manage Farm Solutions. In there, you should see 'icowebparts.wsp'. Click on it and then select 'Deploy Solution'. Make sure you choose to the appropriate site to deploy the web parts to. Click OK.
51. Now go to your created website page (http://machine_name:port_number/), go to Site Actions (top left of page) → Site Settings → Site Collection Administration → Site Collection features.
52. Click on Activate button for ICONICS Silverlight Web Parts.
53. You are all set to add any ICONICS web parts to your portal.
54. To add, for example Energy AnalytiX web part into your web application, open your created portal, click on Toolbar Page where you click on Edit page button as you can see in the next Figure.

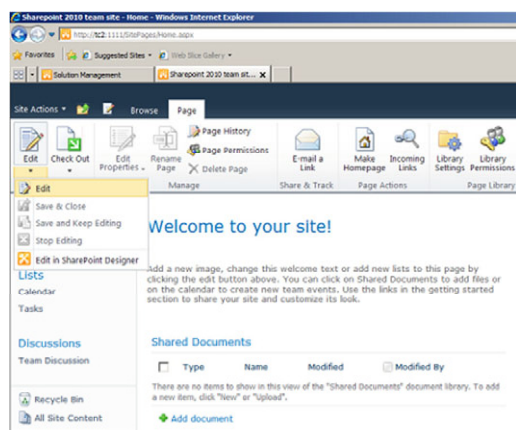


Figure 11– Edit web site

55. Now you can add web parts to your page by clicking on "Add a Web Part" in Insert tab, on either the left or right side of the page.
56. Here you will simply find the ICONICS category and select web part you want to use, here we took for example Energy AnalytiX.

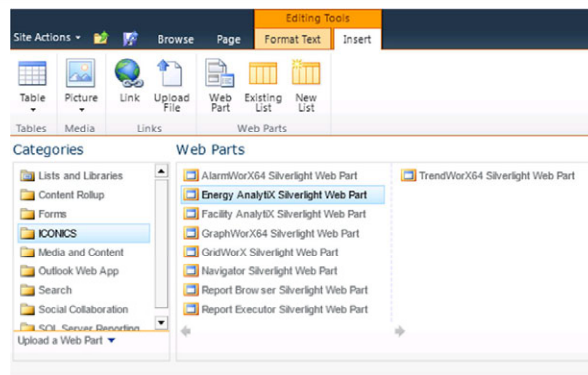


Figure 13 –ICONICS Web parts

57. Click Add button and your web part is added, you can also set down in menu, where this web part should be placed.
58. As soon as you have added any web part, the properties menu will be shown and you can set what you need

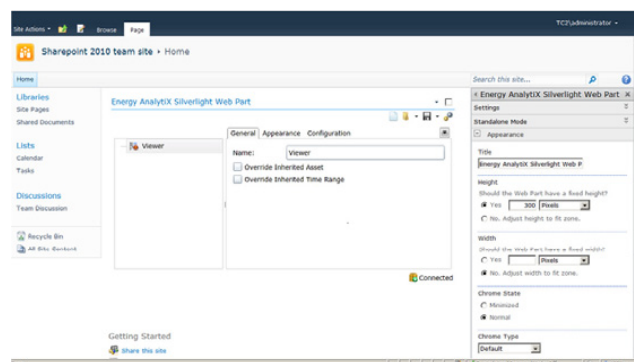


Figure 14 – Editing Tools/Insert/Web part

59. For changing setting of your web parts you just simply click on the small arrow, placed next to the title of you web part.