



Description: Quick Start for the Moeller 2.x OPC Server
OS Requirement: The operating system required is Win XP/2000/2003/NT.
General Requirement:

The Moeller OPC Server allows you to configure OPC Tags which acquire process data from Moeller PLCs.

Capabilities:

- Supports PS4-141, PS4-151, PS4-201, PS4-341, PS416-CPU-200/300/400 PLCs utilizing the SUCOM-A protocol through a RS232 serial communications interface COM1: .. COM4:
- Supports Folders and Sub-Folders for easy configuration and manageability
- Tag Multiplier let you create hundreds of tags in seconds
- Configuration Export/Import CSV (comma separated variable format) for bulk editing tag lists in for instance Text Editors or MS-EXCEL.
- OPC tags can be scaled and have ranges
- Online configuration
- Simulation capabilities.

Configure the Moeller Server

To configure the Moeller OPC Server, the following steps have to be completed.

1. Start the **Moeller Configurator**.

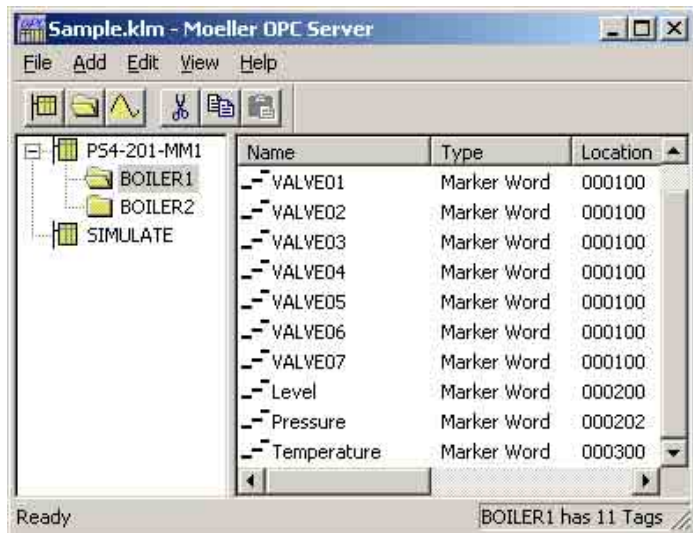


Fig.1 Moeller Configurator

2. Select **File, New** from the menu.

3. Select the **Save As** button and specify **myMoeller.klm** as the name for your configuration file.
4. Select **Add, New Device...** from the menu.
5. Specify a Name for your device: **KMPLC1**
6. Specify the Comm port to which the Moeller Device is connected and click **OK**.

In case you do not have a real Moeller device connected yet, you can select **Simulate**

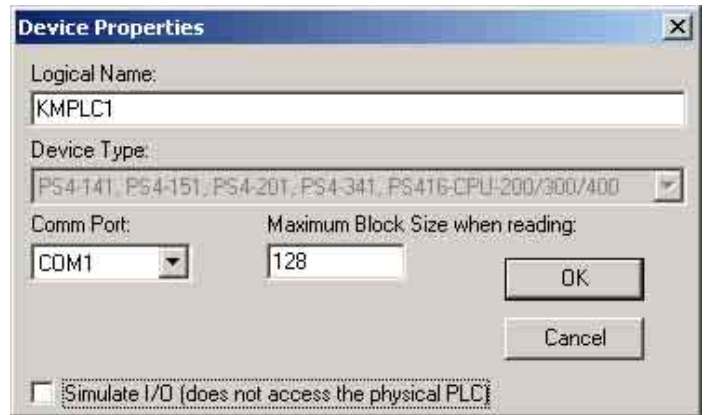


Fig.2 Relevant PC and Device related settings

7. Right mouse click on **KMPLC1** in the left window, and select **New, Group...**



Fig.3 Logical name for a group of tags

8. Specify a name for the folder, for instance **Boiler** and select the **OK** button
9. Right mouse click on the **Boiler** group in the left window, and select **New, Data Tag...**
10. Specify a name for the tag, for instance **Temperature**
 - a. Set the Data Type to **WORD**
 - b. Specify where the **Temperature** can be found in the PLC memory. For instance **Marker Word 50**

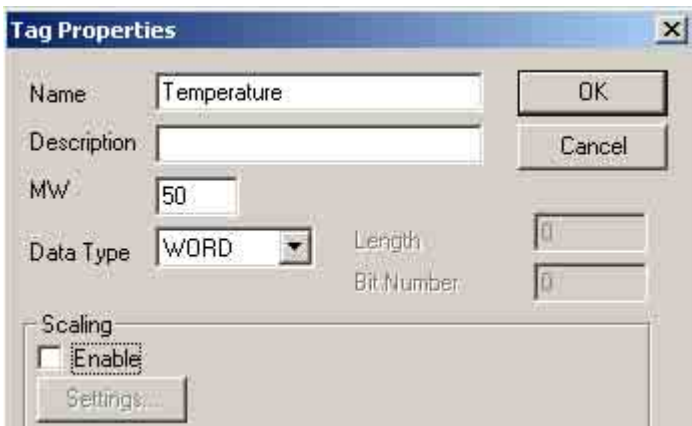


Fig.4 Settings for the Tag.

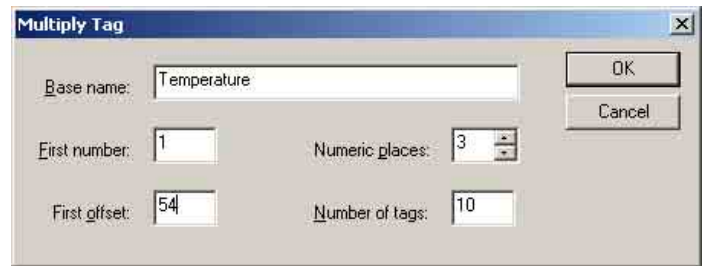


Fig.6 Tag Multiplication

11. Select **OK**
12. Right mouse click once more on the folder **Boiler** in the left window, and select **New, Data Tag...**
13. Specify a name for the item, for instance **Pressure**
 - a. Set the Data Type to **WORD**
 - b. Specify where the **Pressure** tag can be found in the PLC memory. For instance MW 52.
14. Select **OK**
15. Select **File, Save** from the menu
16. Select **View, Monitor** to see live values.

4. Click **OK** and 10 additional tags will be created.

Other advanced capabilities allow you to speed up configuration as well. Select **File, Export/Import CSV...** in order to create a text file which you can manipulate in Notepad or MS-Excel. You could also create additional Folders (boiler2, boiler3,...) and use the **Copy/Paste** or **Drag & Drop** functionality of the Moeller configurator.

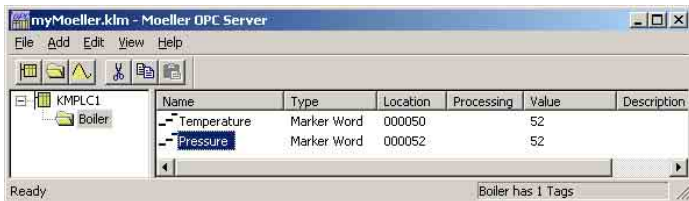


Fig. 5. Monitoring live process data

17. You can select **File, Exit** in order to exit the Moeller Configurator.

Any OPC Client, for instance GraphWorX32 can browse to the Moeller OPC Server and use the OPC Tag.

Advanced Capabilities

You could explore some of the advanced capabilities of the Moeller OPC Server as well. The next example demonstrates how you configure 10 additional temperature tags.

1. Start the **Moeller Configurator**.
2. Click on your **Temperature** Tag
3. Select **Add, Multiply...** from the menu and specify the settings as seen below.