

Description: Guide to installing and configuring the Microsoft Windows SNMP Agent.

OS Requirements: Windows Server 2003 x64/Vista x64/ Server 2008 x64/Windows 7 x64/ Server 2008 R2 x64

General Requirements: installation of GENESIS64.

Introduction

Simple Network Management Protocol (SNMP) is a communication standard that facilitates the exchange of network information between SNMP enabled devices. An SNMP network consists of a Network Management System (NMS), Managed Devices, and Agents. An NMS would monitor or control managed devices that provide SNMP information through the agents.

Here is how SNMP works with GENESIS64. You can consider ICONICS GENESIS64 as an NMS. The Managed Devices are your routers, printers, servers, etc. The Agents are software on the managed devices that provide management information.

This document will walk you through the steps of installing and setting up your SNMP services from windows.

Installing the MS Windows SNMP Agent

1. Open “Program and Features” from the Control Panel.

NOTE: On older operating systems such as Windows XP or Server 2003 you need to insert your original installation CD and click on “Add or Remove Programs”.

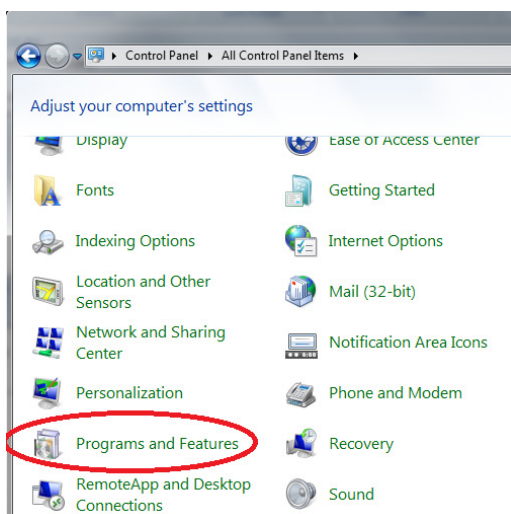


Figure 1 – Program and Features Icon

2. Click on “Turn Windows features on or off” button on the left-hand panel.

NOTE: On older operating systems like Windows XP or Server x64 it is called “Add/Remove Windows Components”.

3. Search for “Simple Network Management Protocol (SNMP)”
4. Check the box next to “WMI SNMP Provider” and click OK.

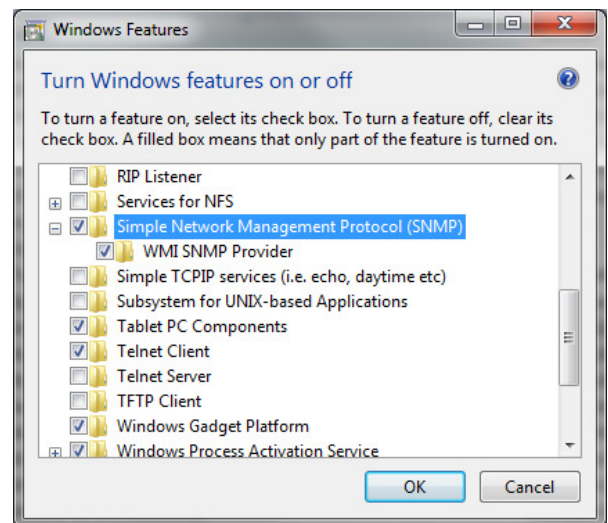


Figure 2 - Turn Windows Features on or off (Windows 7)

5. Wizard will be automatically closed ones SNMP service is installed. Then you can close all remaining windows.

NOTE: On older operating systems such as Windows XP / Server 2003 you need to highlight Management and Monitoring Tools, then click on Details, check the Box next to Simple Network Management Protocol and then click on “OK” as shown on figure below. When prompted to locate the Windows CD and specific files, look under the \1386 folder on the CD.

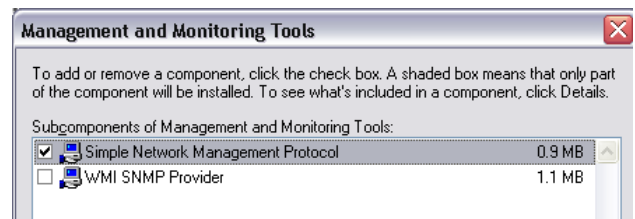


Figure 3 - Management and Monitoring Tools Window

Configuring the MS Windows SNMP Agent Service: SNMP Data

1. Go to Start → Control Panel → Administrative Tools → Services.
2. Select SNMP Service and open the properties page by right-clicking on it and select Properties.

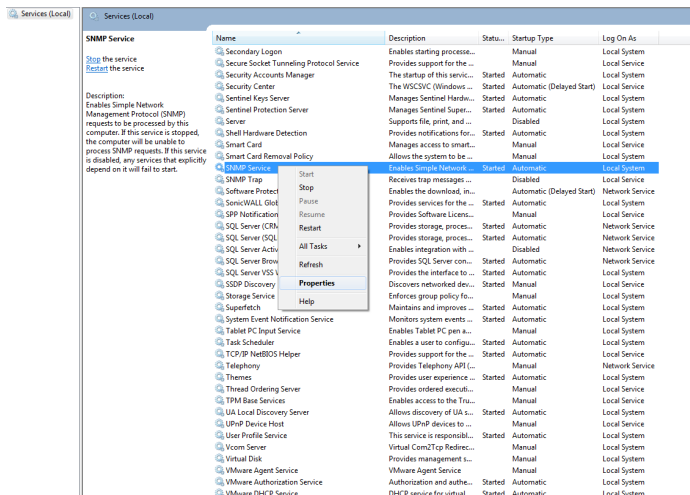


Figure 4 - Select the SNMP Service Properties

3. Select the Security Tab.
4. Add the community names for the devices from which you would like to receive SNMP packets. Specify Community Rights as well.

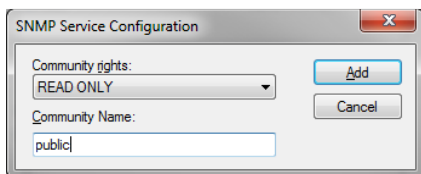


Figure 5 - Set "public" as the Read Community

NOTE: The default read only community for most devices is "public". The ICONICS SNMP Simulator publishes in this community. The default read/write community for most devices is "private".

5. Add the Host Name or IP addresses of devices you wish to receive SNMP packets from by using the "Add..." button in the lower section. You can also choose to accept SNMP packets from any host.

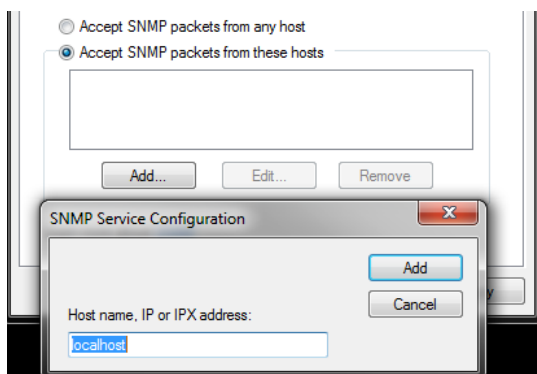


Figure 6 - Add the Host Name or IP Address of SNMP Enabled Devices

6. Click on "OK" to close the properties window.
7. Restart the SNMP service by selecting it and clicking the restart service button on the top toolbar.
8. There is also a SNMP Trap Service in the Services manager. You will need to disable this service.
9. Close the services browser.

Configuring the MS Windows SNMP Agent Service: SNMP Simulator Traps

1. Open Administrative Tools from the Control Panel.
2. Select SNMP Service and open its properties page by right clicking (Figure) on it and selecting Properties.
3. Click on the Traps Tab.
4. Type "public" under community name and click Add to list.
5. Click on "Add..." at the bottom of the window and add "localhost" and the DNS name of your PC.

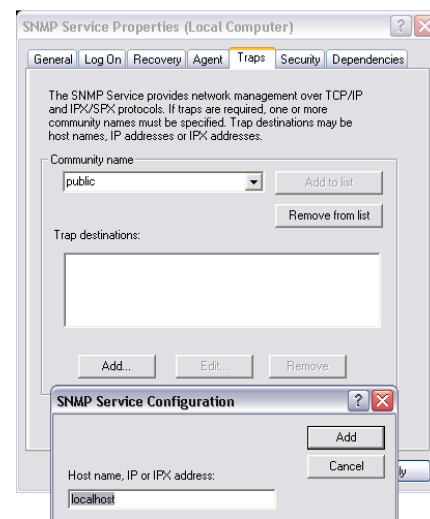


Figure 7 - add "localhost" and the PC's DNS Name

6. Click on "OK" to close the properties window.
7. Restart the SNMP service by selecting it and clicking the restart service button on the top toolbar.
8. Close the services browser.
9. Now you should be able to configure SNMP Traps in ICONICS SNMP Configurator.