



# ReportWorX Express Creating Energy Star Reports



## APPLICATION NOTE

August 2014

**Description:** An introduction to creating Energy Star Reports on ReportWorX Express.

**General Requirement:** Microsoft Excel.

### Introduction

ReportWorX Express is an add-in feature for Microsoft Excel 2013/2010 that allows you easy access to your real-time and historical data repositories from the GENESIS64 Hyper Historian or AnalytiX product suites.

ReportWorX Express supports Energy Star Reporting, and utilizes the Energy AnalytiX Point Manager API. It provides 3 Report options:

- **Energy Use**
- **Water Use**
- **IT Energy Use**

Using ReportWorX Express, you can create and view reports that include various energy statistics and performance quality metrics related to your process. You can also update your report to show the most up-to-date information for your system.

### Configuring a Report Containing Energy AnalytiX Data

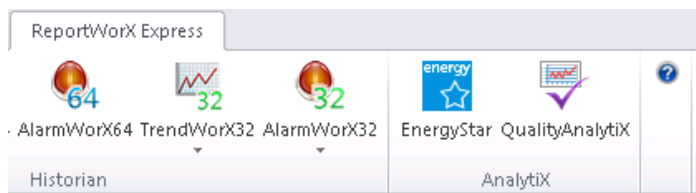


Figure 1 - Energy Star Button on ReportWorX Ribbon

1. Open Microsoft Excel and click on the *ReportWorX Express* tab

**NOTE:** If you do not see the *ReportWorX Express* tab,

1. Click on Start -> ICONICS,
2. select *ReportWorX Express Manager*
3. Check the Enable box and click on OK.
4. Launch MS Excel and when prompted to install RWX Express, click on OK. This will install the add-on to Excel

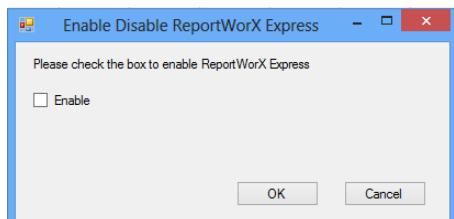



Figure 2 - Enable ReportWorX Express

2. In the AnalytiX group on the Ribbon, select the Energy Star button. The Energy Star task pane will appear on the right-hand side of your screen.
3. For the Output Cell Range textbox, press the Select Range button  to select a range of cells in the report spreadsheet.

**NOTE:** If your currently active database includes more energy calculations than the number of rows you have selected for the Output Cell Range, these new values appear beneath your selection. For this reason, it is not recommended to place output cell ranges above or below one another within a single spreadsheet.

4. For the Start Date Type drop-down list, select Custom to provide your own start date, or select Preset to choose a pre-defined relative date value.
5. If you selected a Start Date Type of Custom, select the Date Picker button in the Start Date text box to open up a calendar where you can choose the earliest date you wish to display in the report. You also have the option of selecting a Start Date Type of Preset, which selects one of various relative date values.
6. For the Start Time textbox, select the hour time value (which is set by default to the time at which you last opened Microsoft Excel).

**NOTE:** Here, you can press the up and down arrow keys to adjust the hour value, or you can enter another value directly. Repeat this process for the minutes time value, the seconds time value, and the AM/PM time value (if applicable). The report displays historical values that the data source tag collected at or after the given time on the date you selected in step 4 or step 5.

7. For the End Date Type drop-down list, select Custom to provide your own end date, or select Preset to choose a pre-defined relative date value.
8. Repeat Step 4 to select an End Date Type.
9. Repeat Step 5 for the End Time textbox.
10. In the Select Report Type drop-down list, choose the type of energy report that you would like to create. ReportWorX Express allows you to select an Energy Use Report, a Water Use Report, or an IT Energy Use Report. The elements of data listed in the Display Columns area changes based on your selection.
11. Select the checkbox *Is Energy Star Template* if you would like the report to conform with the Energy Star Report template
12. Select *Display Headers* if you would like to customize the report based on the available columns
13. Your selection should look similar to the figure below. Hit Apply.



# ReportWorX Express Creating Energy Star Reports




## APPLICATION NOTE

August 2014

Energy Star

**Please click on the Output Cell Range Button to select a range**

Output Cell Range:  
 

Start Date Type:

Start Date:

End Date Type:

End Date:

Select Report Type:


Is Energy Star Template

Display Columns:

Display Headers

- Facility Name
- Energy Meter ID
- Energy Type
- Energy Unit
- Start Date
- End Date
- Energy Consumption
- Energy Cost

Figure 3 - Energy Star Report Configuration

- To view report data in the selected output range of the Microsoft Excel spreadsheet, update the report: .

## Conclusion

With ReportWorX Express, you can configure and view Energy Star reports related to your industrial process quickly and easily, which you can then pass along to colleagues as a simple but powerful tool.

Once you have used ReportWorX Express several times, the product saves your recent data-browsing history and common network connections, storing this information in a machine-wide profile for your convenience.