

Description: Guide to ICONICS Web Publishing Wizard
General Requirement: Installation of WebHMI and IIS.

Introduction

You can use the ICONICS Web Publishing Wizard to publish any Active containers (GraphWorX32 displays, AlarmWorX32, etc) to an IIS/WebHMI Server.

The Web Publishing Wizard can publish displays to local or remote Web Server. The published displays can only contain VB Script and JScript; the display will not publish if it contains any Visual Basic for Applications (VBA) code.

During the publishing process, the wizard creates an .htm file and places it in the user defined location on the selected IIS/WebHMI machine with its associated ActiveX container file, such as a .gdf (GraphWorX32 display) file.

You can view the published .htm file on a WebHMI client machine. The client machine will need Internet Explorer 5.5 or higher and a connection to the WebHMI Server. You do not need to install any ICONICS software on the client machine.

Publishing a GraphWorX32 Display

1. Open a display that you would like to publish.
2. Select File → Save As... In the Save As dialog window, select GraphWorX32 Displays without VBA as the Save as type, and save the file.

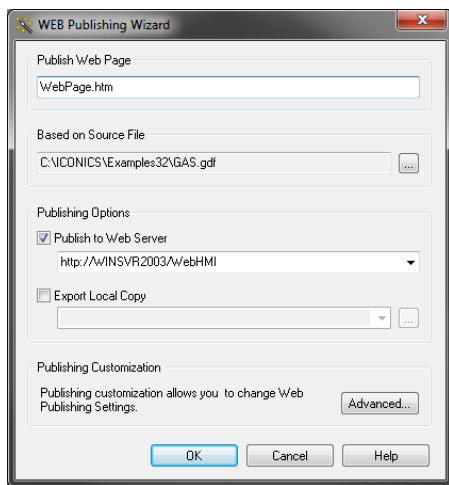



Figure 1 - Web Publishing Wizard

NOTE: You may want to save this file with a different name or in a different location. However, do not save the file in the directory that you are publishing to; it will cause problems.

3. Click on the “Publish to HTML”  button in the main toolbar to bring up the Web Publishing Wizard.
4. The file name for your web page is by default the name of your GraphWorX32 source file. However, you can change the name.
5. Check on the Publish to Web Server option if it’s not already checked.
6. You can optionally export a local copy if you wish to, but it’s not required.
7. Click on the “Advanced...” button. There are four tabs in the Advanced Web Publishing Wizard Properties window:

Server Switching Support allows you to choose a GenBroker configuration file to use. You should choose As Configured in WebHMI Settings to use the default.gb file for communications between the WebHMI Server and Clients. If you have configured a different .gbx (GenBroker configuration) file to be used, select User Defined and specify the file.

Publishing Channel allows you to choose if you want to publish via HTTP or FTP channel. Simply select appropriate radio button. For more information on how to set up the FTP service and publishing via the FTP channel see application note *WebHMI – Publishing GraphWorX32 Displays via FTP channel*.

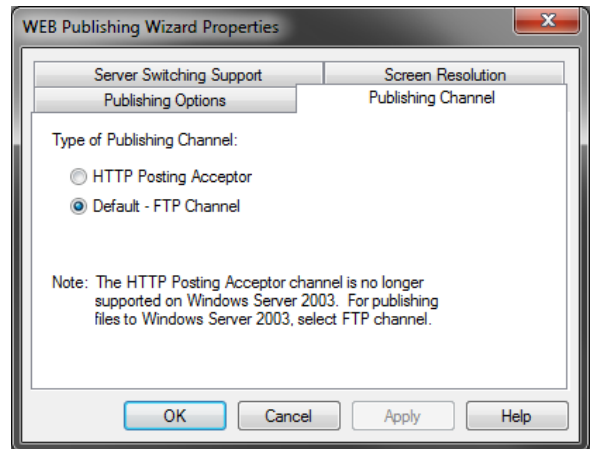


Figure 2 - Web Publishing Wizard Properties

NOTE: HTTP channel (HTTP Posting Acceptor) is no longer supported on Windows Server 2003 and Windows Server 2008. You must publish through the FTP channel using this OS.

8. Click on “OK” to save the changes you have made in the Web Publishing Wizard Properties and click on “OK” again in the Web Publishing Wizard to publish your web page. You will see a confirmation dialog when you have successfully published your display.