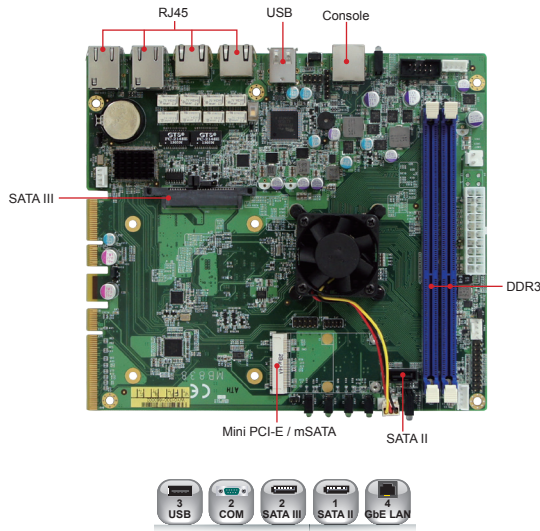


# MB838

## Intel® Atom™ C2000 Family (Rangeley) with QuickAssist Technology Networking Motherboard



### Features

- Support up to 8-cores Intel® Atom™ Processor, up to 2.4GHz
- Support Intel newest QuickAssist acceleration technology
- Advanced LAN Bypass
- 4x PCI-E GbE ports with status LED indicator
- 2x DDR3-1600 DIMM, Max. 32GB
- 1x Mini PCI-E socket, 1x PCI-Ex4 expansion finger, 1x PCI-E(x8) expansion finger
- Support DPDK

### System

CPU	Intel® Atom™ Processor C2000 series with QuickAssist Technology
System Memory	2x DDR3 DIMM Max. 32GB, up to 1600MHz non-ECC
System Chipset	Embedded
BIOS	AMI
Watchdog Timer	256 levels
SSD	1x mSATA (SATA III), 2x SATA (SATA III & SATA II)
H/W Monitor	Yes
Expansion Slots	1x mPCI-E (m-SATA compatible) 1x PCI-E(x4) (IP334) 1x PCI-E(x8) (IP332)

### Graphics

VGA Controller	N/A
VGA Memory	N/A
Display Interface	N/A

### LAN

Controller	1x Intel® I347-AT4 Quad port GbE PHY
Bypass	LAN 1/2
Connector	4x RJ-45 on board

### Multi I/O

I/O Chipset	Fintek F81866AD-I 2x RS-232
USB	2x USB 2.0 (Rear I/O)
Others	N/A

### Mechanical and Environmental

Dimensions	203 x 108 mm (7.99" x 4.25")
Max. Power Requirement	50W
Operating Temperature	0°C~60°C (32°F~140°F)
Storage Temperature	-20°C~80°C (-4°F~176°F)
Relative Humidity	10%~90% (non-condensing)

### Ordering Information

MB838-2C	Intel® Atom™ C2358 with QuickAssist SoC (1.7GHz), 4x GLAN (I347-AT), Eth1/2 bypass, SATA, Mini PCI-E/ mSATA, PCI-E expansion, 12V DC-In (w/o power adaptor, PK1-51, USB2-7)
MB838-4C	Intel® Atom™ C2558 with QuickAssist SoC (2.4GHz), 4x GLAN (I347-AT), Eth1/2 bypass, SATA, mPCI-E/ mSATA, PCI-E expansion, 12V DC-In (w/o power adaptor, PK1-51, USB2-7)
MB838-8C	Intel® Atom™ C2758 with QuickAssist SoC (2.4GHz), 4x GLAN (I347-AT), Eth1/2 bypass, SATA, Mini PCI-E/ mSATA, PCI-E expansion, 12V DC-In (w/o power adaptor, PK1-51, USB2-7)
IP334	Riser card, 1-to-1 PCI-E expansion
PK1-51	Console cable, 160cm
USB2-7	Dual port USB 2.0 cable, 30cm