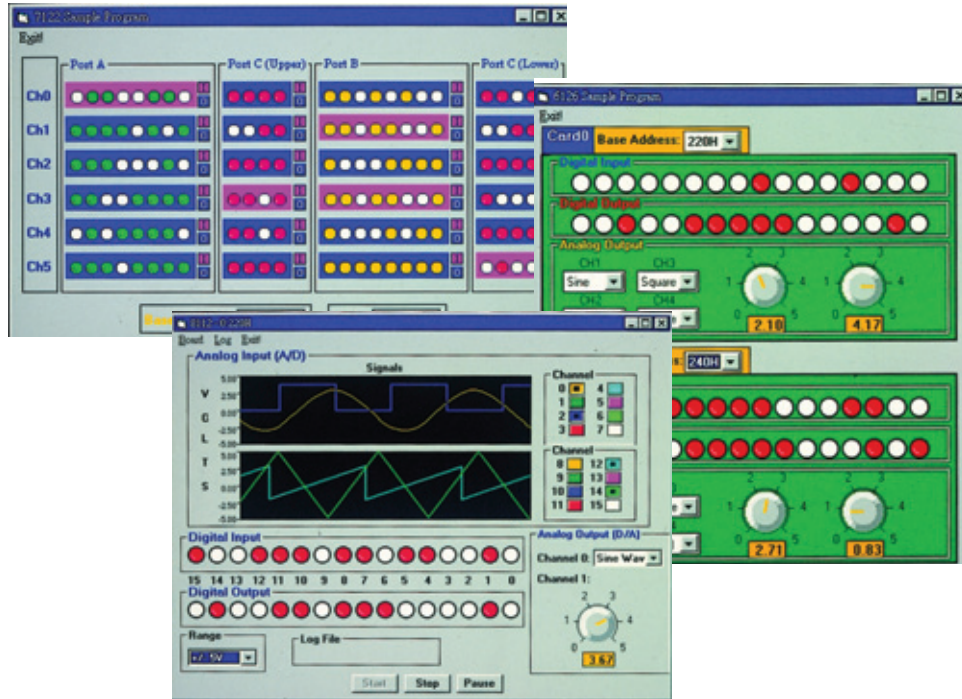


ACLS-DLL1, ACLS-DLL2

ADLINK ISA-bus DAQ Cards Drivers for Windows



Features

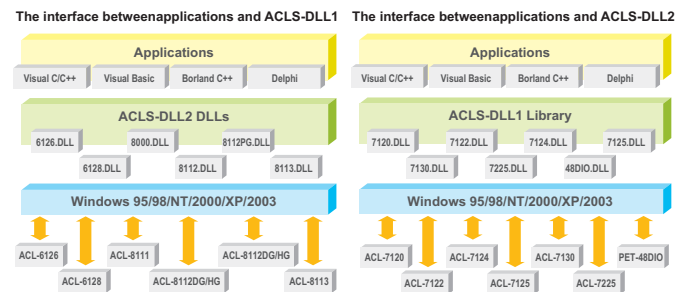
- Standard Windows driver libraries in DLL format
- Supports Windows 95/98/NT/2000/XP/Server 2003
- Makes full use of the capabilities of NuDAQ ISA-bus data acquisition cards
- Native 32-bit Windows device drivers
- Provides linking files for both Visual C/C++ and Borland C++
- Provides header files for both Visual Basic and Borland Delphi
- Provides a complete set of Visual C/C++ and Visual Basic example programs

What are ACLS-DLL1 and ACLS-DLL2 ?

ACLS-DLL1 and ACLS-DLL2 are Windows driver libraries for ADLINK NuDAQ ISA-bus data acquisition cards. ACLS-DLL1 supports digital I/O cards and ACLS-DLL2 supports multi-function cards. These driver libraries can be used with any Windows programming languages, including Microsoft Visual C/C++, Visual Basic, Borland C++, Delphi, etc.

ACLS-DLL1 and ACLS-DLL2 implement all the necessary functions to support complete hardware capabilities. Users can use ACLS-DLL1/DLL2 to easily deal with complex operation issues such as memory management, interrupt handling, and DMA transfer. Using ACLS-DLL1/DLL2 also lets users take advantage of the powerful features of Microsoft Windows environments, including multi-tasking, extended memory, and a graphical user interface, to develop data acquisition applications. ACLS driver libraries provide an easy and efficient way to access NuDAQ ISA-bus data acquisition cards in Windows.

Architecture of Driver Interface



Supported Modules

- **ACLS-DLL1**
ACL-7120A, ACL-7122A, ACL-7124, ACL-7125, ACL-7130, ACL-7225, PET-48DIO, ACL-8454
- **ACLS-DLL2**
ACL-8316/L, ACL-8312/L, ACL-8112HG, ACL-8112DG, ACL-8112PG, ACL-8216, ACL-8113A, ACL-8111, ACL-6126, ACL-6128A



Please visit <http://www.adlinktech.com> and search for

- **ACLS-DLL1**
Windows driver library for ADLINK NuDAQ ISA-bus digital I/O cards
- **ACLS-DLL2**
Windows driver library for ADLINK NuDAQ ISA-bus multi-function data acquisition cards