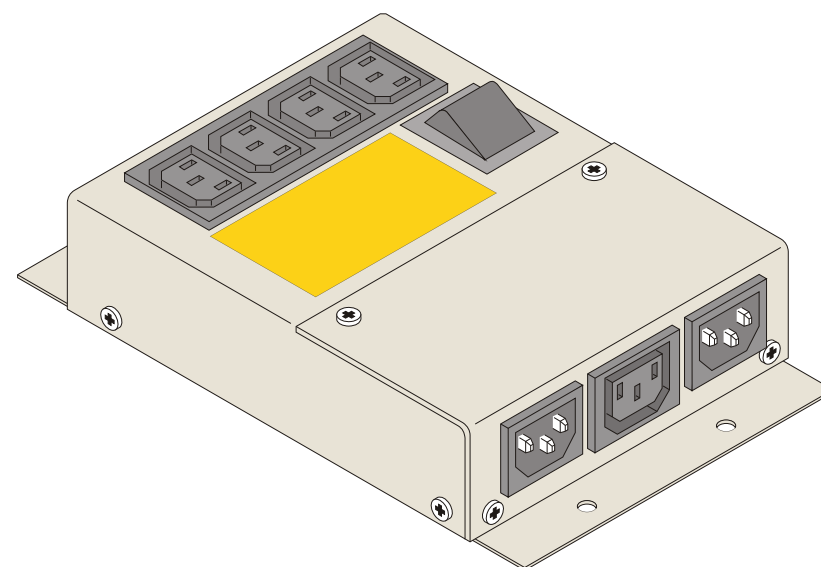


# IMV

## Manual Service Bypass



user manual

ver 1.3

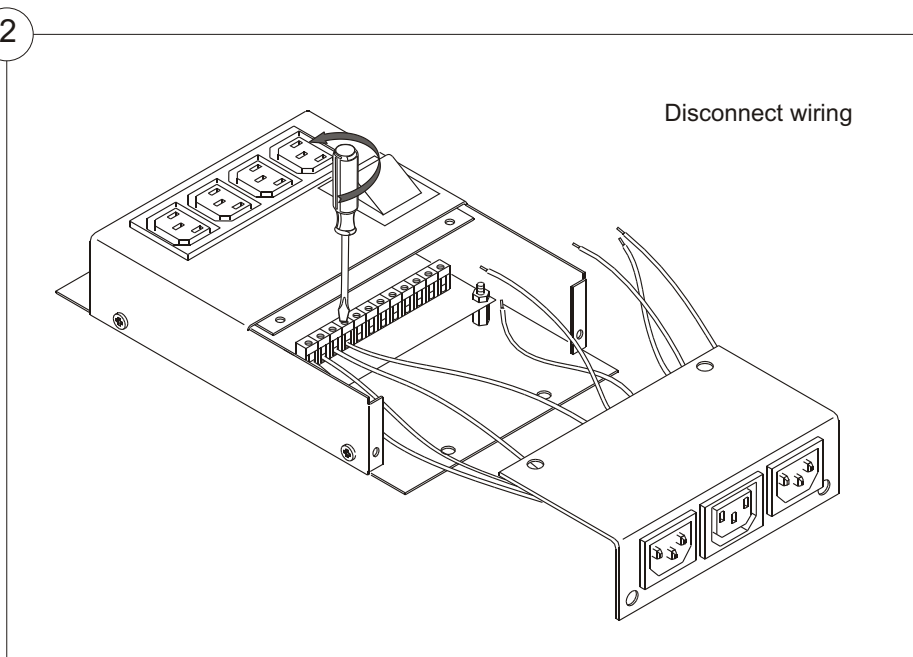
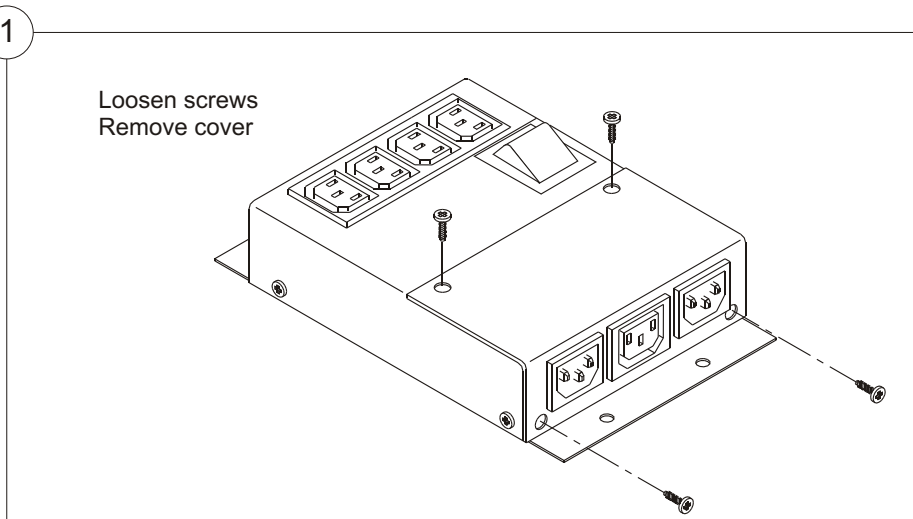


IMV Victron b.v.  
P.O. Box 31  
NL-9700 AA Groningen  
Koningsweg 27  
9731 AP Groningen  
The Netherlands

Tel: +31 (0)50 59 777 77  
Fax: +31 (0)50 59 777 95  
<http://www.imv.com>

# APPENDIX

The IMV Bypass SerVICe Box can be installed in hard wired environments using the terminal strip inside the box. The wiring can be lead through the extra cover that came with the box. This section describes how to alter the box.



## USER MANUAL IMV MANUAL SERVICE BYPASS

### PREFACE

We thank you for selecting an IMV product, and recommend that you read these instructions carefully before installation and use of the Manual Service Bypass. Please keep this manual in a safe place for future reference.

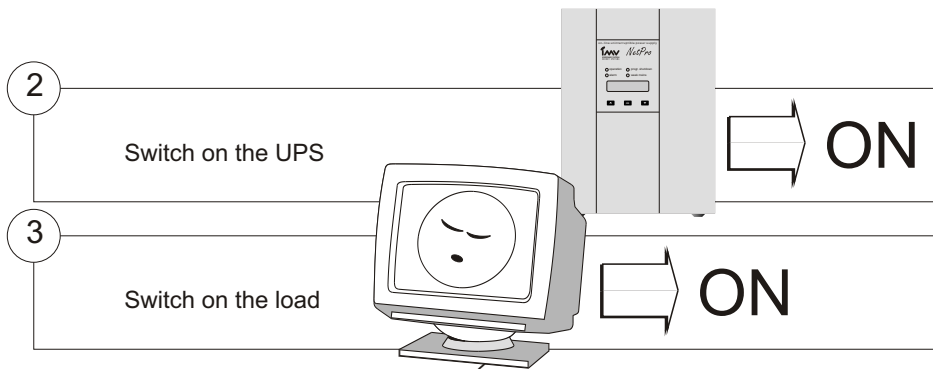
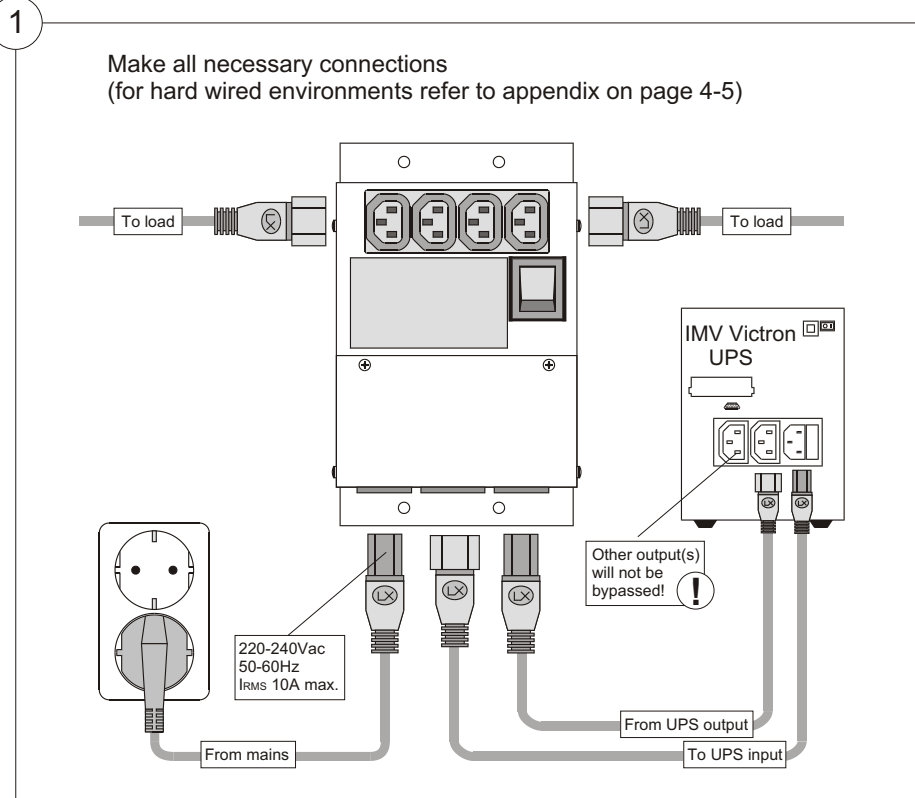
### CONTENTS

1	Introduction
2	Installation
3	Use
4	Specifications
	Appendix: Instructions for hard wired environments

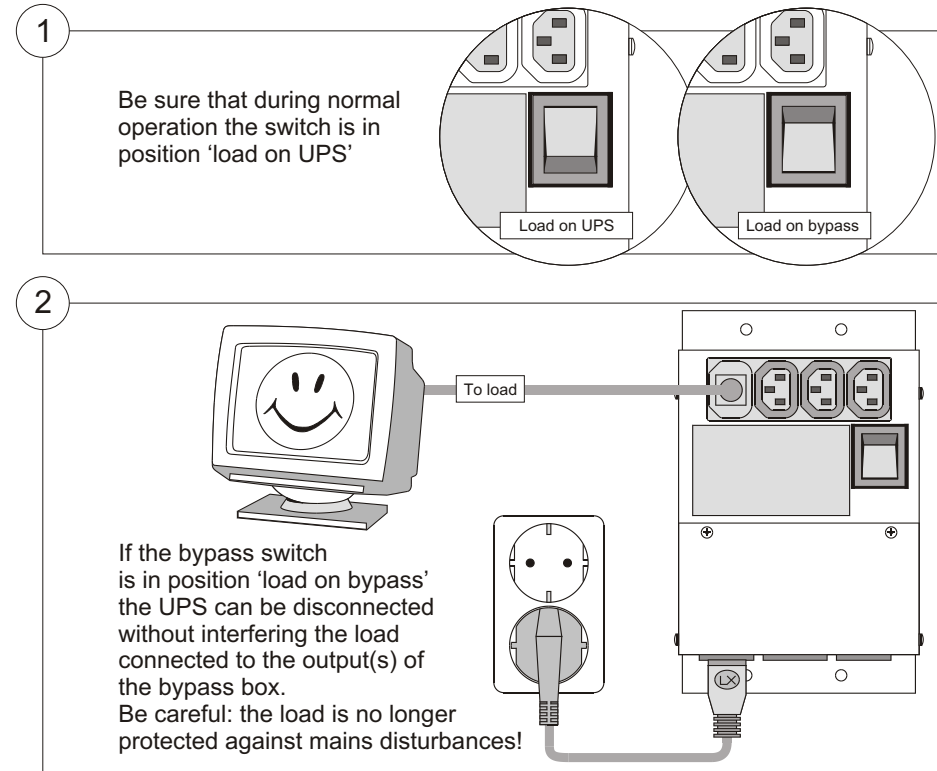
# 1 INTRODUCTION

The IMV Manual Service Bypass contains a manual bypass switch and allows maintenance or testing of an IMV MATCH or NetPro UPS without interfering the load protected by the UPS.

## 2 INSTALLATION



## 3 USE



## 4 SPECIFICATIONS

Power supply	: 220-240Vac, 50-60Hz
Max. input current	: 10A (plugged) / 16A (hard wired)
Input	: 1 x IEC 320 socket (male) or screw terminals
Output	: 4 x IEC 320 sockets (female) or screw terminals
Transfer time	: 5-15mS
Weight (kg)	: 0.78 (plugged) / 0.74 (hard wired)
Dimensions (hxxwxd)	: 53 x 130 x 204 mm
Operating temp.	: -10 to +40 °C

