



Touch it!

Touch Panel Family

with zenOn 6.22

VIPA[®]
art of automation



zenOn Editor:

The zenOn product family is a user-friendly and powerful software for industrial automation.

zenOn is the right product - no matter if a machine operating system (HMI), a process visualization system or control system or an interface system for registration of operating data is required. zenOn is offering special features for water treat-

Demand-orientated functions by modular software design:

Based on your requirements zenOn is growing through flexible expansions and guarantees safety of investment:

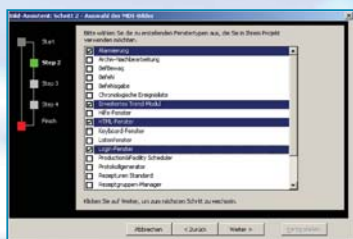
Comfortable storage of process data and display of trend lines, effective production data acquisition with projectable data



ment technology, building control, production, pharmaceutical industry, process engineering or energy supply.

Consistent, safe system family (Windows® CE/2000/XP/WWW/Server 2003, inclusive 64 Bit versions):

Highly available project development with platform independent development terminal. Automatic distribution of user data and project data.



Easy project planning through standardized and arbitrary parameters:

Time-saving project development due to graphical intuitive display. Flexible project extension due to unlimited extension of variables.

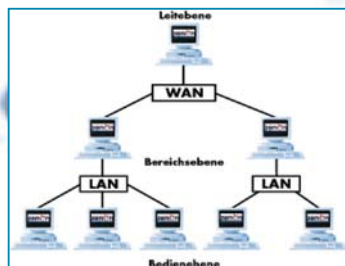
analysis. Configurable recording of interference data and operating data, saving and selective analysis.

Modern network technology by spreaded client-server structure:

Realising decentral data recording and administration. Integrated Remote administration for project planning and maintenance.

Connectivity:

Flexible multi-driver structure for connection of different target systems. Open, standardized interfaces for data exchange in all directions (zenOn is providing 200 different drivers at the moment).



zenOn 6.22 Runtime:

for Windows® CE 5.0

Features:

- Basic Version with 256 tags
- Graphical intuitive display
- Conformity to FDA 21 CFR part 11
- Flexible extension of variables up to 2048 tags
- Storage of process data with trend line
- Recording of interference and production data with analysing possibility
- Remote administration for project planning and maintenance
- Project transfer per Ethernet or RS232
- Multiterminal use
- Runtime in any language
- Project planning independent from resolution
- Comprehensive symbol library
- Variable transfer from third-party systems: e.g. S7 und Beckhoff
- Event-driven data traffic
- Automatic reconnect and data synchronisation
- Time fixing per seconds for alarms and history
- Password and user administration
- Extensive driver library
- Remote desktop connection

Option: SW936000 zenOn 6.22-Webserver up to 3 parallel connections

Article number:

SW93102	zenOn 6.22-Editor, for Windows CE 5.0, 256 tags
SW931A2	zenOn 6.22-Editor-Upgrade, 256 up to 512 tags
SW931AB2	zenOn 6.22-Editor-Upgrade, 512 up to 1024 tags
SW931BC2	zenOn 6.22-Editor-Upgrade, 1024 up to 2048 tags
SW931W	zenOn 6.22 Editor, Dongle
SW931U2	zenOn Editor, Versions-Upgrade from 6.20 to 6.21
SW936	zenOn 6.22-Runtime, 256 tags only in connection with VIPA Touch
SW936A2	zenOn 6.22-Runtime-Upgrade, 256 tags > 512 tags
SW936AB2	zenOn 6.22-Runtime-Upgrade, 512 tags > 1024 tags
SW936BC2	zenOn 6.22-Runtime-Upgrade, 1024 tags > 2048 tags

VIPA®
art of automation

