

RISC-based Digital Signage Platforms



Selection Guide

Model Name		DSA-2102V	DSA-2102	DSA-2101	DSA-5110D
Media Formats	Video	MPEG-1, MPEG-2 MP @ ML up to 14 Mbps, MPEG-4 ASP			MPEG-1, MPEG-2 MP @ ML up to 14 Mbps, MPEG-4 ASP
	Audio	2 channels, MPEG-1 and MPEG-2 Layers I, II and III (MP3), 16-bit PCM, bit rate up to 384 kbps, sample rate up to 48 kHz			2 channels, MPEG-1 and MPEG-2 Layers I, II and III (MP3), 16-bit PCM, bit rate up to 384 kbps, sample rate up to 48 kHz
	Graphics	32-bit color with transparency BMP, JPEG			32-bit color with transparency BMP, JPEG
	Text	Variable scrolling speed and position			Variable scrolling speed and position
	Playlist	Scheduling playback, endless loop playback, auto play after power on			Scheduling playback, endless loop playback, auto play after power on
Video-Out	Digital and Analog	VESA DVI-I connector x 1, up to 720p, 1280 x 720 @ 60 Hz			Built-in LCD display, 10.2", 800 x 480 pixels (wide VGA)
	Composite	RCA jack x 1			-
	S-Video	Mini-DIN 4-pin connector x 1			-
Audio-Out	R / L Channel Analog	Unbalanced stereo RCA jack x 2			3.5 Ø Stereo phone jack x 1 Embedded 3 watt stereo speakers
	S/PDIF	Coaxial digital audio output	-	-	-
Video-In	Composite	RCA jack x 1	-	-	-
Audio-In	R / L Channel Analog	Unbalanced stereo RCA jack x 2	-	-	-
Network	10/100 Mbps	RJ-45 x 1			RJ-45 x 1
Serial	RS-232	D-Sub 9-pin (male) x 1			-
USB	USB 2.0 Host	USB Type A connector x 2			USB Type A connector x 2
Network Protocol		HTTP, DHCP			HTTP, DHCP
IDE		40 GB HDD	40 GB HDD	512 MB Flash Memory	1 GB Flash Memory
Power computation		Approx. 15 W	Approx. 15 W	Approx. 7 W	Approx. 15 W
Power Supply		DC 12 V input			DC 12 V input
Operating Temperature		0 to 40° C (32 to 140° F)			0 to 40° C (32 to 140° F)
Relative Humidity		5-85% @ 40° C			5-85% @ 40° C
Dimensions		211 x 153 x 43 mm (8.31" x 6.02" x 1.69")			256 x 195 x 52 mm (10.08" x 7.68" x 2.05")
Weight		Approx. 1.7 kg (3.75 lb) (for DSA-2102); Approx. 1.1 kg (2.42 lb) (for DSA-2101)			Approx. 2.9 kg (6.39 lb)

x86-based Digital Signage Platforms

Digital Signage

1

Digital Video Solutions

2

Ubiquitous Scenario Control

3

Self-service System Modules

4



NEW



NEW



Selection Guide

Model Name		DSA-3300	DSA-3400	DSA-3610	DSA-3710
Processor & System	CPU	Intel Pentium M/ Celeron M processor	Intel Core 2 Duo Mobile Processor	Intel Core 2 Duo Mobile Processor	Intel Core 2 Duo Desktop Processor
	Chipset	Intel 852GME/ICH4	Intel 945GM / ICH7M	Intel GME965 / ICH8M	Intel Q965 / ICH8M
	L2 Cache	Depends on CPU type	2 MB	4 MB	4 MB
	BIOS	AWARD 4-Mbit BIOS	AWARD 4-Mbit BIOS	AMI 16MB SPI BIOS	AWARD 16MB bit BIOS
	Front Side Bus	533/400 MHz	400/533/667 MHz	533/800 MHz	533/800/1066 MHz
Memory	Technology	DDR 200/266/333 MHz	DDR2 400/533/667 MHz	DDR2 533/667 MHz	DDR 2 533/667/800 MHz
	Max. Capacity	1 GB	2 GB	4 GB	4 GB
	Socket	200-pin SODIMM x 1	200-pin SODIMM x 2	200-pin SODIMM x 2	240-pin DIMM x 2
Graphics	Chipset	Chipset integrated VGA controller	Intel Graphics Media Accelerator 950	Intel Graphics Media Accelerator X3100	Intel Graphics Media Accelerator 3000
	Memory Size	Shared system memory up to 64 MB	Shared system memory up to 224 MB	Shared system memory up to 384 MB	Shared system memory up to 256 MB
	Resolution	up to 1600 x 1200 @ 85 Hz and 2048 x 1536 @ 75 Hz	Up to 2048 x 1536 @ 75 Hz	Up to 2048 x 1536 @ 75 Hz	Up to 2048 x 1536 @ 75 Hz
I/O Ports	DVI	DVI-D x1			-
	VGA	D-Sub 15-pin x 1			
	Audio	AC97 - LINE-OUT, MIC-IN			
	Network	RJ-45 x 1, 10/100 Base-T	RJ-45 x 1, 1 Gbit Lan x 1	RJ-45 x 2, 1 Gbit LAN x 2	RJ-45 x 2, 1 Gbit Lan x 1
	Mini-PCI	Mini-PCI x1 (for optional WLAN module or TV tuner module)		-	-
	USB 2.0	USB connector x 4 (480 Mbps)			
	Serial	COM1 - RS-232 COM2 - RS-232	COM1 - RS-232 COM 2 - RS-232/485	RS-232	RS-232
	PSW	External power switch connector			
	CardBus	-	PCMCIA slot x1	-	-
	TV Out	-	S-Video and Compsite video	-	-
Storage	IDE-0	2.5" HDD (40 GB default)		-	-
	IDE-1	-	CompactFlash socket for type I/II		-
	SATA	-		3.5" HDD (80 GB default)	3.5" HDD (80 GB default)
Power	Power Computation	Average 29 W, Maximum 45 W	Average 33 W, Maximum 49 W	Power Output Wattage AC 120 W	Power Output Wattage AC 180 W
	Power Supply	12V DC ~ 24V DC, 12V DC@4.14 A , 24V DC@2.07 A		Type AC 100 ~ 240 V	Type AC 100 ~ 240 V
	System Alarm	Schedule boot up function			
Environment	Temperature	-10 ~ 45° C (14 ~ 113° F) , Operating			
	Relative Humidity	95% @ 40 °C (non-condensing), Operating			
	Vibration Resistance	1 Grms ,IEC 60068-2-64,Random,5~500 Hz, 1hr/axis			
Physical	Dimensions	222 x 135 x 43 mm (8.7" x 5.3" x 1.7")	222 x 135 x 47 mm (8.7" x 5.3" x 1.85")	272 x 232 x 78 mm (9.1" x 7.7" x 2.6")	250 x 253 x 156 (9.84" x 9.96" x 6.14")
	Weight	1.25 kg (0.57 lb)	1.47 kg (0.67 lb)	4 kg (8.8lb)	6.2 kg (13.64lb)
Watchdog Timer	Output	Interrupt, system reset			
	Interval	Programmable 1~255 sec.			
Certification	Electromagnetic	CE, FCC			
	Safety	UL, CB, CCC			
	Environmental Protection	RoHS, WEEE			

DSA-2101/2102

Network Digital Signage Platform



Features

- Multi-zone display with video & audio, graphics, and text
- Update content and schedule over network without interrupting content playback
- Supports MPEG 1/2/4 and DivX 5.0 video format; JPEG and BMP graphics
- Supports 16:9 and 4:3 display in landscape or portrait mode
- Supports HDTV resolution; automatically scales up SD content to HD output
- Excellent reliability: fanless design with built-in heat dispersion
- Flexible scheduling capability
- Low energy consumption and RoHS compliant
- Optional AV-input function for external video & audio input

Introduction

The Advantech DSA-2102 series Network Digital Signage Platform receives media content such as video, audio, graphics, and text via an IP network, and stores the content on its internal hard disk drive. The content is displayed according to either a pre-defined playlist or network commands. The DSA-2102 series features the most advanced decoder and graphic processor available. It outputs both digital and analog video signals for modern, high definition display devices: plasma, LCD screens, and projectors. The DSA-2102 is an ideal networked digital content player for advertising, presentations, training, and other media applications.

Specifications

Player Contents		
Video	MPEG-1, MPEG-2 MP @ ML up to 14 Mbps, MPEG-4 ASP	
Audio	2 channels, MPEG-1 and MPEG-2 Layers I, II and III (MP3), 16-bit PCM, bit rate up to 384 kbps, sample rate up to 48 kHz	
Graphics	32-bit color with transparency BMP, JPEG	
Text	Scrollable text, variable scrolling speed and position	
Playlist	Scheduling playback, endless loop playback, auto play after power on	
Input and Output Ports		
Video Input *	Composite	1 x RCA jack
Audio Input *	R/L channel analog	2 x Unbalanced stereo RCA jack
Video Output	DVI digital and analog	1 x VESA DVI-I connector, up to 720P HD, 1280 x 720 @ 60 Hz
	Composite	1 x RCA jack
	S-Video	1 x Mini-DIN 4-pin connector
Audio Output	R/L channel analog	2 x Unbalanced stereo RCA jacks
Network	10/100 Mbps	1 x RJ-45 jack
Serial Port	RS-232	1 x D-sub 9-pin (male)
USB	USB 2.0 Host	2 x USB type A ports
Network Protocol	Supports HTTP, DHCP	
System		
Internal Storage	40 GB HDD (for DSA-2102), 512 MB Disk-on-Module (for DSA-2101)	
Dimensions (W x H x D)	211 x 153 x 43 mm (not including mounting bracket and I/O connector) (8.3" x 6" x 1.7")	
Net Weight	Approx. 1.7 kg (3.74 lb) (for DSA-2102); approx. 1.1 kg (2.42 lb) (for DSA-2101)	
Power Consumption	Approx. 15 W (for DSA-2102); approx. 7 W (for DSA-2101)	
Power Supply	DC 12V input	
Operating Temperature	0 to 40° C (32 ~ 104° F), Humidity 5 – 85% @ 40° C	

* AV-ins is an optional function only available with the DSA-2102V.

DSA-5110D

Network Digital Signage Display



Features

- Built-in wide 10.2" TFT LCD with 800 x 480 resolution
- Compact size design with embedded stereo speakers
- Content-rich presentation: supports video & audio, graphics, and text
- Supported network protocol: HTTP and DHCP
- Multiple display zones for maximum advertising efficiency
- Flexible scheduling capability
- Automatic Play-On-Power-Up
- Built-in embedded disk-on-module
- Excellent reliability: no moving parts with fanless design
- Optional external video and audio input

Introduction

The Advantech DSA-5110D Network Digital Signage Display integrates with a 10.2" TFT LCD. It receives media content such as video, audio, graphics, and text via an IP network, then stores the content in its internal or external storage. The content is displayed according to either a pre-defined playlist or network commands. The DSA-5110D series features the most advanced decoder and graphic processor available. The DSA-5110D is an ideal network Digital Signage display solution for advertising, presentations, training, and other media applications.

Specifications

Player Contents		
Video	MPEG-1, MPEG-2 MP @ ML up to 14 Mbps, MPEG-4 ASP	
Audio	2 channels, MPEG-1 and MPEG-2 Layers I, II and III (MP3), 16-bit PCM, bit rate 384 kbps, sample rate up to 48 kHz	
Graphics	32-bit color with transparency BMP, JPEG	
Text Banner	Variable scrolling speed and position	
Playlist	Scheduling playback, endless loop playback, auto play after power on	
Input and Output Ports		
Video Output	Built-in LCD disply	10.2", 800 x 480 pixels
Audio Output	R / L channel analog	1 x 3.5 Ø Stereo phone jack
	Embedded Speakers	3 Watts Stereo
Network	10/100 Mbps	1 x RJ-45 jack
USB	USB 2.0 Host	2 x USB type A ports
Network Protocol	Supports HTTP, DHCP	
Display		
Size	10.2" Wide (Diagonal)	
Resolution	800 x 480 pixels RGB (Wide-VGA)	
Number of Colors	262,144	
Surface Treatment	Anti-glare	
Contrast Ratio	400 (typ.)	
Brightness	400 cd/m² (typ.)	
Viewing Angle	45/65/65/65° for U/D/L/R (typ.)	
System		
Storage	Internal flash memory disk (Disk-on-module) 1 GB default	
Dimensions (W x H x D)	256 x 195 x 52 mm (10.1" x 7.7" x 2.1")	
Net Weight	Approx. 2.9 kg	
Power Supply	DC 12 V input	
Operating Temperature	0 ~ 40° C (32 ~ 104° F), Humidity 5 – 85% @ 40° C	

Benefits

Rich Content Presentation & Maximum Advertising Efficiency

Advantech's DSA-5110D Digital Signage solution supports MPEG 1/2/4, DivX 5, MP3 and other formats for video & audio, and JPEG and BMP formats for graphics. Scrolling text displays multiple languages. Advantech offers user-definable layout templates with up to 7 zones of display to deliver maximized advertising efficiency for our customers. Insertion of live events and queuing numbers are supported with versatile messaging functions.

Compact Size with High Performance Display

The DSA-5110D comes with a built-in 10.2" TFT wide LCD, and a pair of high-fidelity stereo speakers. With a 256 x 195 mm (10.04" x 7.68") compact dimension, it provides versatile input and output functions that offer users and developers the best performance and convenience.

Optimized Internal Storage Utilization and Content Management

The DSA-5110D is equipped with an internal Disk-on-Module. It offers flexible storage space with optimum utilization. Playback, operation, and transmission logs and reports are available to support client billing and error tracking.

Digital Signage

1

Digital Video Solutions

2

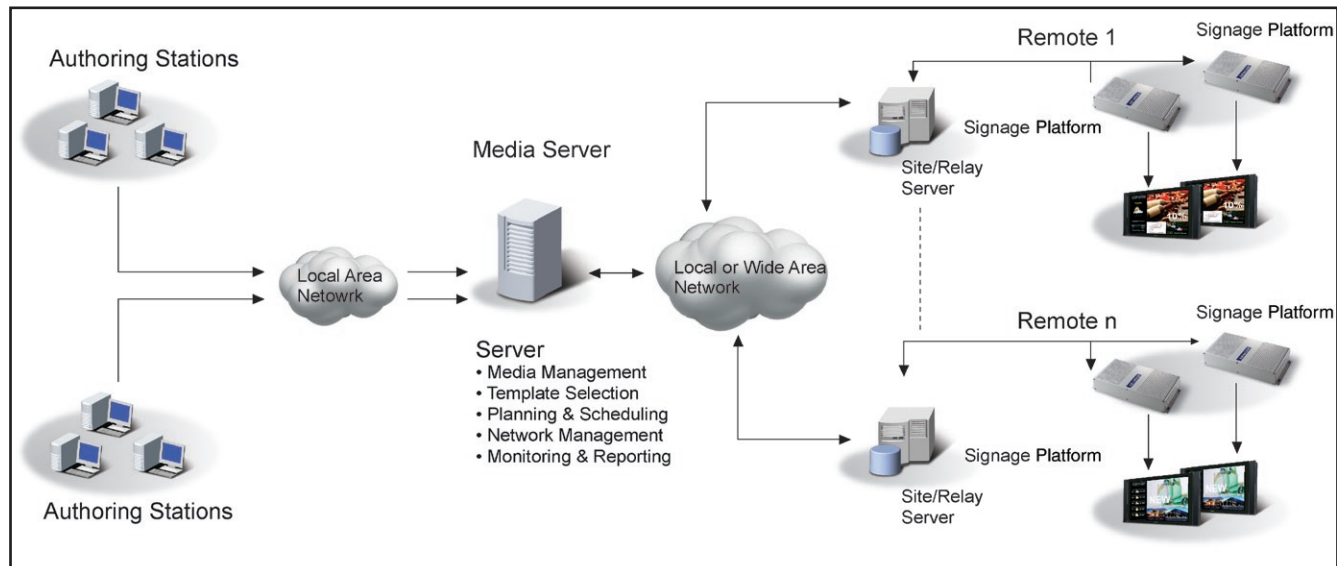
UbiQ Scenario Control

3

Self-service System Modules

4

System Configuration



Ordering Information

Part Number	Descriptions
DSA-5110DE	DSA-5110D, 10.2" Network Digital Signage Display

Power Cord Options

Part Number	Descriptions
1702002600	Power cord, 180cm, 180D, US/UL
1702031836	Power cord, 180cm, 180D, AU/SA
1702002605	Power cord, 180cm, 90D, EU/CE
1702031801	Power cord, 180cm, 90D, UK/5A fuse

DSA-3300

Network Digital Signage Platform



Features

- Compact size with robust construction
- Supports Intel® Celeron® M/Pentium® M processor
- x86 architecture for easy application development & integration
- Optional WLAN or TV-Tuner module support
- Supports EWF (Enhanced Write Filter), WDT (Watchdog Timer), and scheduled boot up SDK under Windows® for access protection and enhanced availability
- Easy mounting with Plasma or LCD panel
- Supports both landscape and portrait mode of display and dual display (VGA + DVI)



Introduction

DSA-3300 is a small profile, all-in-one Windows® XPE ready network appliance and control box for digital signage application. This compact, easy-to-implement network appliance enables centralized control, scheduling and delivery of multimedia content through IP/Ethernet networks. Built on an x86 platform and XP Embedded OS, it is easy for application development and can be integrated with PDPs (Plasma Display Panel) and LCDs with a multi-vendor networking environment. WLAN features are available as an option for locations where a wiring infrastructure is not available for network connectivity. A TV-tuner option is also available for integrating the TV function into the signage application. DSA-3300 combined with the EWF, WDT and scheduled boot up SDK gives maximum reliability for digital signage applications.

Specifications

Processor & System	CPU	Supports Intel Pentium M/Celeron M processor
	Chipset	Intel 852GM/ICH4
	L2 Cache	Depends on CPU type
	BIOS	AWARD 4-Mbit BIOS
	Front Side Bus	400 MHz
Memory	Technology	DDR 200/266 MHz modules
	Max. Capacity	1 GB
	Socket	200-pin SODIMM
Graphics	Chipset	Chipset integrated VGA controller
	Memory Size	Shared system memory up to 64 MB
	Resolution	up to 1600 x 1200 @ 85 Hz and 1920 x 1440 @ 60 Hz
Ethernet	Interface	10/100 Base-T
	Controller	Intel 82551QM (WOL supported)
	Connector	RJ-45
	WLAN (Optional)	802.11b/g
Storage	IDE	2.5" HDD Tray (40 GB default)
I/O Interface	DVI	1 (DVI-D digital signal output only)
	VGA	1 (D-sub 15-pin)
	LAN	1 (RJ-45)
	USB	4 (USB 2.0 compliant, 480 Mbps)
	Audio	AC97 - Line-out, Mic-in
	Serial	COM1 - RS-232, COM2 - RS-232
	PS/2	1 (For keyboard and mouse with Y cable)
	Mini-PCI (Internal)	1 (For optional WLAN module or TV tuner module)
	PSW	External Power Switch Connector
Power Requirement	Management	APM 1.2, ACPI supported
	Power Consumption	Average 29 W, Maximum 45 W
	Input Voltage	12 V DC - 24 V DC, 12 V DC @ 4.14 A, 24 V DC @ 2.07 A
	Others	Supports Boot on Power back and schedule boot up function
Watchdog Timer	Output	Interrupt, system reset
	Interval	Programmable 1 ~ 255 sec.
Physical Characteristics	Mounting	Easy Mounting Kits for LCD or Plasma
	Dimensions (W x H x D)	222 x 135 x 43 mm (8.7" x 5.3" x 1.7")
	Weight	1.25 kg (2.75 lb)
Environment	Temperature	-10 ~ 45° C (14 ~ 113° F), Operating
	Relative Humidity	95% @ 40° C (non-condensing), Operating
	Vibration Resistance	0.5 Grms, IEC 60068-2-64, Random, 5 ~ 500 Hz, 1hr/axis
Software Development Kit	Operating System	Supports Microsoft Windows XP with SP2, XP Embedded and Windows 2000 with SP4.
	EWF & WDT SDK	EWF and WDT library for signage stability design in XPE
	Demo Program	Complete demo program with VC++ sample code for reference

Features & Benefits

High Performance

DSA-3300 series incorporates an Intel Celeron M 1.5GHz/ Intel Pentium M 1.6 GHz processor for smooth program playback, and includes 512 MB of base memory and a default 40 GB hard disk drive for program and storage of media files.

Compact & Robust Form Factor

The small foot-print and low-profile case design of DSA-3300 series is designed to facilitate different types of mounting and installation.

Network-Manageable

DSA-3300 series function as IP-addressable clients so that they can be connected locally through a Local Area Network or remotely through a Wide Area Network.

Wireless & Tuner Options

DSA-3300 series can be connected to the network either via a wireless connection or through standard Ethernet cable. DSA-3300 also comes with a tuner-integrated option which incorporates live TV programs as part of the presentation material.

Enhanced Reliability

DSA-3300 series integrates the EWF (Enhanced Write Filter) function, WDT (Watch Dog Timer) and scheduled boot-up SDK. Running under Microsoft Windows XP Embedded OS, EWF provides a facility for protecting a partition from write accesses. It allows the system to maintain its original state to maximize system reliability.

Digital
Signage

1

Digital Video
Solutions

2

UbiQ Scenario
Control

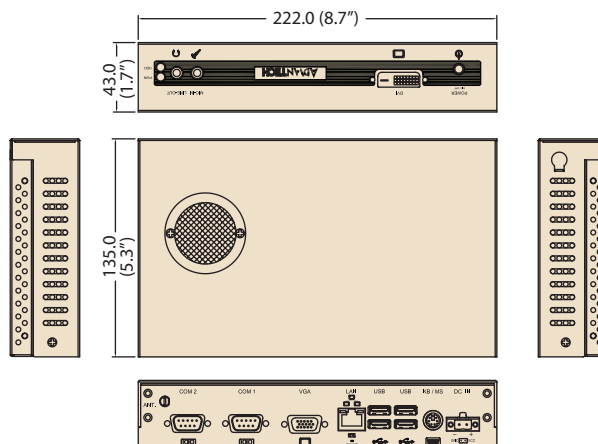
3

Self-service
System
Modules

4

Block Diagram

Unit: mm (inch)



Ordering Information

Part Number	Description
DSA-3300-M5E	Standard model with Celeron M 1.5 GHz/512 MB RAM/40 GB HDD
DSA-3300-WM5E	Standard model with Celeron M 1.5 GHz/512 MB RAM/40 GB HDD/Wireless module
DSA-3300-S6E	Standard model with Pentium M 1.6 GHz/512 MB RAM/40 GB HDD
DSA-3300-WS6E	Standard model with Pentium M 1.6 GHz/512 MB RAM/40 GB HDD/Wireless module
DSA-3300-HTS6E	Standard model with Pentium M 1.6 GHz/512 MB RAM/40 GB HDD/Analog + DVB-T hybrid TV tuner module (upon request)
DSA-3300-ATS6E	Standard model with Pentium M 1.6 GHz/512 MB RAM/40 GB HDD/Analog TV tuner module (upon request)

* Celeron M 1.5 GHz can support two MPEG-4 Video @ Full D1 (720 x 480 in NTSC, 720 x 576 in PAL) resolution under 65 % CPU utilization rate.

* Pentium M 1.6 GHz approximate to P4 2.8 GHz performance

Packing List

Part Number	Description	Quality
2062330000	Utility CD	x 1
1700060202	Y cable of Keyboard and PS/2 Mouse	x 1
1700001394	DC Jack with 2-pin pluggable terminal block	x 1
9689000450	AC to DC Adapter, 19 V DC @ 3.16 A, 60 W, 100-240 V, 3-pins AC-inlet Mode with Phoenix Power Plug	x 1
1960006001	Mounting Accessory	x 2

Optional Items

Part Number	Description
2070000852	XPE SP2 OS Image and License for DSA-3300 series Traditional Chinese Version
2070000853	XPE SP2 OS Image and License for DSA-3300 series English Version
965G330000E	802.11b/g WLAN Module
9689071001	Power cord 3-pin 180 cm, USA
170203183C	Power cord 3-pin 180 cm, Europe

DSA-3400

Network Digital Signage Platform with Intel® Core™ 2 Duo Mobile Processor



Features

- Compact size and low-noise design
- Supports Intel® Core™ 2 Duo mobile processor
- Optional WLAN or TV-Tuner module support
- Multiple HD video content playback
- Easy mounting with Plasma or LCD panel
- Supports both landscape and portrait mode of display and dual display (VGA + DVI)
- CompactFlash for advanced integration



Introduction

DSA-3400 is a small profile, all-in-one Windows XPE ready network appliance and control box for digital signage applications. The Intel Core 2 Duo processor gives it the power for HDTV decoding and multiple media content processing. This compact, easy-to-implement network appliance enables centralized control, scheduling and delivery of multimedia content through IP/Ethernet networks. Built on an x86 platform and XP Embedded OS, it is easy for application development and can be integrated with PDPs (Plasma Display Panel) and LCDs with a multi-vendor networking environment. WLAN features are available as an option for locations where a wiring infrastructure is not available for network connectivity. A TV-tuner option is also available for integrating the TV function into the signage application. DSA-3400 combined with the EWF, WDT and the scheduled boot up SDK gives maximum reliability for digital signage applications.

Specifications

Processor & System	CPU	Supports Intel Core 2 Duo / Core Duo / Core Solo Mobile processor
	Chipset	Intel 945GM / ICH7M-DH
	L2 Cache	2 MB
	BIOS	AWARD 4 M-bit BIOS
	Front Side Bus	400/533/667 MHz
Memory	Technology	Dual channel DDR2 667/533/400
	Max. Capacity	2 GB
	Socket	2 x 200-pin DIMM
	Chipset	Intel Graphics Media Accelerator 950
Graphics	Memory Size	Shared system memory up to 224 MB
	Resolution	Up to 2048 x 1536 at 75 Hz
	Interface	Gigabit LAN Controller
Ethernet	Controller	Marvell 88E8053
	Connector	1 x RJ-45
	WLAN (Optional)	802.11b/g
Storage	IDE-0	2.5" HDD Tray (40 GB default)
	IDE-1	CompactFlash socket for type I/II
	SATA	2
	DVI	1 (digital signal output only)
I/O Interface	VGA	1 (D-sub 15-pin)
	LAN	1 (RJ-45)
	USB	4 (USB 2.0 compliant, 480Mbps)
	Audio	AC97 - Line-out, Mic-in, Line-in
	Serial	COM1 - RS-232, COM2 - RS-485/RS-232 (default RS-232)
	PS/2	1 (For keyboard and mouse with Y cable)
	Mini-PCI (Internal)	1 (For optional WLAN module or TV tuner module)
	PSW	External Power Switch button
	TV Out	S-video and Composite video
Power Requirement	Management	APM 1.2, ACPI supported
	Power Consumption	Average 33 W, Maximum 49 W
	Input Voltage	12 V DC - 24 V DC, 12V DC @ 4.14 A, 24V DC @ 2.07 A
	Others	Supports Boot on Power back and schedule boot up function
Watchdog Timer	Output	Interrupt, system reset
	Interval	Programmable 1 ~ 255 sec.
Physical Characteristics	Mounting	Easy Mounting Kits for LCD or Plasma
	Dimensions (W x H x D)	222 x 135 x 47 mm (8.7" x 5.3" x 1.85")
	Weight	1.47 kg (3.23 lb)
Environment	Temperature	-10 ~ 40° C (14 ~ 104° F), Operating
	Relative Humidity	95% @ 40° C (non-condensing), Operating
	Vibration Resistance	0.5 Grms, IEC 60068-2-64, Random, 5-500 Hz, 1hr/axis
Software Development Kit	Operation System	Supports Microsoft Windows XP with SP2, XP Embedded and Win2000 with SP4.
	EWF & WDT SDK	EWF and WDT library for signage stability design in XPE
	Demo Program	Complete demo program with VC++ sample code for reference

Features & Benefits

High Performance & Network-manageable

The DSA-3400 series incorporates an Intel Core 2 Duo Mobile processor for smooth program playback, and includes 2 x 512 MB Dual channels of base memory and a default 40 GB hard disk drive for program and storage of media files. The Core 2 Duo technology gives DSA-3400 a solid base for high density video decoding, and multiple video decoding with better video quality. DSA-3400 series functions as an IP-addressable client so that it can be connected locally through a local area network or remotely through a wide area network.

Compact & Low Noise

The small foot-print and low-profile case of DSA-3400 series is designed to facilitate different types of mounting and installation. The low power mobile CPU reduces noise for signage applications.

Wireless & Tuner Options

DSA-3400 series can be connected to the network either via a wireless connection or through a standard Ethernet cable. DSA-3400 also comes with a tuner-integrated option which incorporates live TV programs as part of the presentation media.

Enhanced Reliability

DSA-3400 series integrates EWF (Enhanced Write Filter), WDT (Watch Dog Timer) and scheduled boot-up SDK. Running under Microsoft Windows XP Embedded OS, EWF provides a facility for protecting a partition from write accesses. It allows the system to maintain its original state to maximize system reliability.

Digital Signage

1

Digital Video Solutions

2

UtilQ Scenario Control

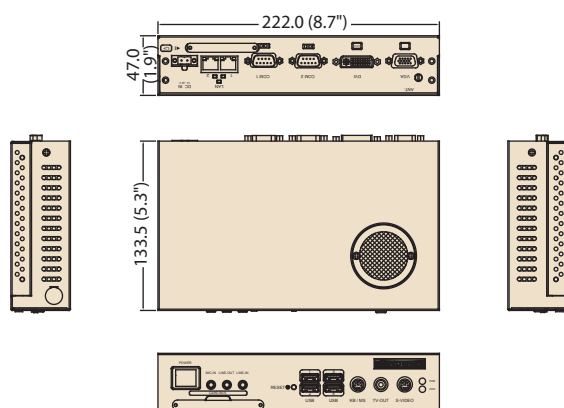
3

Self-service System Modules

4

Dimensions

Unit: mm (inch)



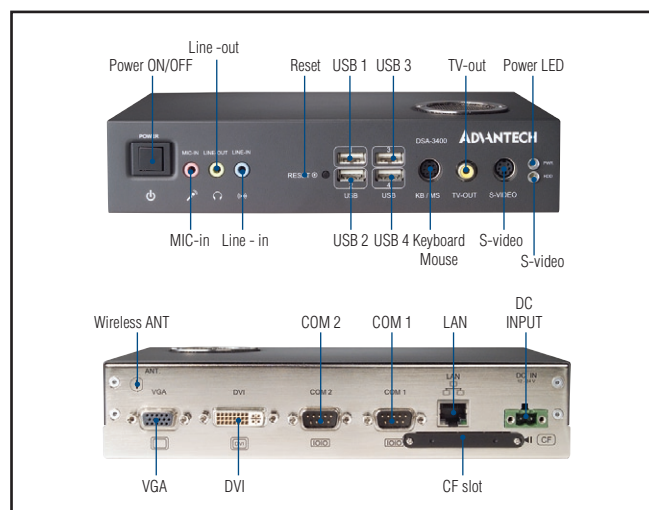
Ordering Information

Part Number	Description
DSA-3400-NT56E	Standard model with Intel Core 2 Duo T5600 1.83 GHz Mobile processor/2 x 512 MB RAM/40 GB HDD
DSA-3400-WT56E	Standard model with Intel Core 2 Duo T5600 1.83 GHz Mobile processor/2 x 512 MB RAM/40 GB HDD/802.11b/g Wireless module (upon request)
DSA-3400-HT56E	Standard model with Intel Core 2 Duo T5600 1.83 GHz Mobile processor/2 x 512 MB RAM/40 GB HDD/Hybrid TV tuner module (upon request)
DSA-3400-AT56E	Standard model with Intel Core 2 Duo T5600 1.83 GHz Mobile processor/2 x 512 MB RAM/40 GB HDD/Analog TV tuner module (upon request)

Packing List

Part Number	Description	Quantity
2062340000	Utility CD	x 1
1700060202	Y cable for Keyboard and PS/2 Mouse	x 1
1700001394	DC Jack with 2-pin pluggable terminal block	x 1
1960007897	Mounting Accessory	x 2
1757000222	AC to DC Adapter, 19 V DC @ 3.16 A, 60 W, 100-240 V, 3-pin AC-inlet Mode with Phoenix Power Plug	x 1

I/O Ports



Optional Items

Part Number	Description
1700001947	Power cord 2-pin 180 cm, USA
1700001948	Power cord 2-pin 180 cm, Europe
965G330000E	802.11b/g WLAN Module (only for DSA-3300 and DSA-3400 series use)
2070001296	XPE SP2 OS Image and License for DSA-3400 series English Version
2070001297	XPE SP2 OS Image and License for DSA-3400 series Traditional Chinese Version

DSA-3610

Network Digital Signage Platform with Intel® Core™ 2 Duo Mobile Processor

NEW



Features

- Compact size and low-noise design
- Supports Intel® Core™ 2 Duo mobile processor
- Multiple HD video content playback
- Easy mounting with Plasma or LCD panel
- Supports both landscape and portrait mode of display and dual display (VGA + DVI-D)
- CompactFlash for advanced integration



Introduction

DSA-3610 is a small profile, all-in-one Windows XPE ready network appliance and control box for digital signage applications the Intel Core 2 Duo processor gives it the power for HDTV decoding and multiple media content processing. This compact, easy-to-implement network appliance enables centralized control, scheduling and delivery of multimedia content through IP/Ethernet networks. Built on an x86 platform and XP Embedded OS, it is easy for application development and can be integrated with PDPs (Plasma Display Panel) and LCDs with a multi-vendor networking environment.

Specifications

Processor & System	CPU	Supports Intel Core 2 Duo / Core Duo / Core Solo Mobile processor
	Chipset	Intel GME965/ICH8M
	L2 Cache	4 MB
	BIOS	AMI 16 M-bit BIOS
	Front Side Bus	533/800 MHz
Memory	Technology	Dual channel DDR2 533/667
	Max. Capacity	4 GB
	Socket	2 x 200-pin DIMM
Graphics	Chipset	Intel Graphics Media Accelerator X3100
	Memory Size	Shared system memory up to 384 MB
	Resolution	Up to 2048 x 1536 at 75 Hz
Ethernet	Interface	Gigabit LAN Controller
	Controller	Realtek RTL8111C
	Connector	1 x RJ-45
Storage	SATA	3.5" HDD Tray (80 GB default)
	IDE-1	CompactFlash socket for type I/II
I/O Interface	DVI	1 (DVI-D Connector, digital signal output only)
	VGA	1 (D-sub 15-pin)
	LAN	2 (RJ-45)
	USB	4 (USB 2.0 compliant, 480 Mbps)
	Audio	AD1882 - Line-out, Mic-in, Line-in
	Serial	COM1 - RS-232, COM2 - RS-232
	PS/2	1 x Keyboard, 1 x Mouse
	Mini-PCI (Internal)	-
	PSW	Internal power supply - ATX PSU connector
Power Requirement	Power Consumption	Power Output Wattage AC 120 W
	Input Voltage	Type AC 100 ~ 240 V
Watchdog Timer	Output	Interrupt, system reset
	Interval	Programmable 1 ~ 255 sec.
Physical Characteristics	Dimensions (W x H x D)	272 x 232 x 78 mm (10.71" x 9.13" x 3.07")
	Weight	4 kg (8.8lb)
Environment	Temperature	-10 ~ 40° C (14 ~ 104° F), Operating
	Relative Humidity	95% @ 40° C (non-condensing), Operating
	Vibration Resistance	0.5 Grms, IEC 60068-2-64, Random, 5-500 Hz, 1hr/axis

Ordering Information

Part Number	Description
DSA-3610-NI75E	Standard model with T7500/1G DDR2/80G HD

DSA-3710

Expansion Network Digital Signage Platform with Intel® Core™ 2 Duo Desktop Processor

NEW



Features

- Supports Intel® Core 2 Quad or Core 2 Duo processor
- Mini-ITX form factor with 82Q965
- Supports add-on graphic card via PCIe x16
- Multiple HD video content playback up to 1080p
- Default VGA port; optional video I/O ports e.g. DVI, HDMI, and TV-Out via add-on graphic card
- 1 x GbE LAN, 4 x USB, 2 x COM



Introduction

DSA-3710 is a small profile, all-in-one Windows XPE ready network appliance and control box for digital signage applications. The Intel Core 2 Duo processor gives it the power for HDTV decoding and multiple media content processing. This compact, easy-to-implement network appliance enables centralized control, scheduling and delivery of multimedia content through IP/Ethernet networks. Built on an x86 platform and XP Embedded OS, it is easy for application development and can be integrated with PDPs (Plasma Display Panel) and LCDs with a multi-vendor networking environment. The PCIe x 16 expansion slot provides optional add on graphic card function for enhanced video process power.

Specifications

Processor & System	CPU	Supports Intel Core 2 Quad/ Core 2 Duo / Core Duo / Core Solo Mobile processor
	Chipset	Intel 82Q965/ICH8
	L2 Cache	4 MB
	BIOS	AWARD 16 M-bit bit BIOS
	Front Side Bus	533/800/1066 MHz
Memory	Technology	Dual channel DDR2 533/667/800
	Max. Capacity	4 GB
	Socket	2 x 240-pin DIMM
Graphics	Chipset	Intel Graphics Media Accelerator 3000
	Memory Size	Shared system memory up to 256 MB
	Resolution	Up to 2048 x 1536 at 75 Hz
	Expansion Slot	PCIe x16
Ethernet	Interface	Gigabit LAN Controller
	Controller	Realtek RTL8111B
	Connector	1 x RJ-45 jack
Storage	SATA	3.5" HDD Tray (80 GB default)
I/O Interface	VGA	1 (D-sub 15-pin)
	LAN	1 (RJ-45)
	USB	4 (USB 2.0 compliant, 480Mbps)
	Audio	AC97 - Line-out, Mic-in, Line-in
	Serial	COM1 - RS-232, COM2 - RS232
	PS/2	1 x Keyboard, 1 x Mouse
	PSW	ATX Power connector
Power Requirement	Power Consumption	Power Output Wattage AC 180 W
	Input Voltage	Type AC 100 ~ 240 V
Watchdog Timer	Output	Interrupt, system reset
	Interval	Programmable 1 ~ 255 sec.
Physical Characteristics	Dimensions (W x H x D)	250 x 253 x 156 (9.84" x 9.96" x 6.14")
	Weight	6.2 kg (13.64lb)
Environment	Temperature	-10 ~ 40° C (32 ~ 104° F), Operating
	Relative Humidity	95% @ 40° C (non-condensing), Operating
	Vibration Resistance	0.5 Grms, IEC 60068-2-64, Random, 5-500 Hz, 1hr/axis

Ordering Information

Part Number	Description
DSA-3710-NE66E	Standard model with E6600/1G DDR2/80G HDD

Digital Signage

1

Digital Video Solutions

2

Ubiquitous Scenario Control

3

Self-service System Modules

4